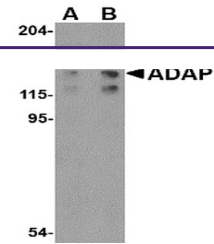

Product Datasheet

FYB Antibody (orb1240287)

Description	FYB Antibody
Species/Host	Rabbit
Reactivity	Human, Mouse
Conjugation	Unconjugated
Tested Applications	ELISA, ICC, IF, WB
Immunogen	ADAP antibody was raised against a 20 amino acid synthetic peptide from near the carboxy terminus of human ADAP. The immunogen is located within amino acids 640 - 690 of ADAP.
Target	FYB
Preservatives	ADAP Antibody is supplied in PBS containing 0.02% sodium azide.
Form/Appearance	Liquid
Concentration	1 mg/mL
Storage	ADAP antibody can be stored at 4°C for three months and -20°C, stable for up to one year. As with all antibodies care should be taken to avoid repeated freeze thaw cycles. Antibodies should not be exposed to prolonged high temperatures.
Note	For research use only
Application notes	ADAP antibody can be used for detection of ADAP by Western blot at 0.5 - 1 µg/mL. Antibody can also be used for immunocytochemistry starting at 10 µg/mL. For immunofluorescence start at 20 µg/mL. Antibody validated: Western Blot in human samples and Immunocytochemistry in human samples. All other applications and species not yet tested.
Isotype	IgG
Clonality	Polyclonal
Uniprot ID	O15117
NCBI	NP_001456
Dilution Range	ADAP antibody can be used for detection of ADAP by Western blot at 0.5 - 1 µg/mL. Antibody can also be used for immunocytochemistry starting at 10 µg/mL. For immunofluorescence start at 20 µg/mL. Antibody validated: Western Blot in human samples and Immunocytochemistry in human samples. All other applications and species not yet tested.



Western blot analysis of ADAP in K562 ce...



Immunocytochemistry of ADAP in K562 cell...