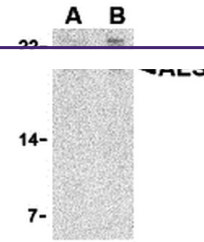
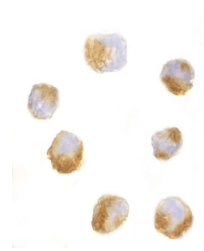

Product Datasheet

AES Antibody (orb1240279)

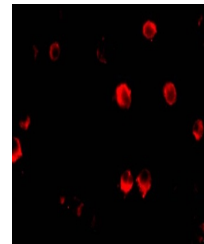
Description	AES Antibody
Species/Host	Rabbit
Reactivity	Human, Mouse
Conjugation	Unconjugated
Tested Applications	ELISA, ICC, IF, WB
Immunogen	AES antibody was raised against a 16 amino acid synthetic peptide from near the amino-terminus of human AES. The immunogen is located within the first 50 amino acids of AES.
Target	AES
Preservatives	AES Antibody is supplied in PBS containing 0.02% sodium azide.
Form/Appearance	Liquid
Concentration	1 mg/mL
Storage	AES antibody can be stored at 4°C for three months and -20°C, stable for up to one year. As with all antibodies care should be taken to avoid repeated freeze thaw cycles. Antibodies should not be exposed to prolonged high temperatures.
Note	For research use only
Application notes	AES antibody can be used for the detection of AES by Western blot at 2 - 4 µg/mL. Antibody can also be used for immunocytochemistry starting at 10 µg/mL. For immunofluorescence start at 20 µg/mL. Antibody validated: Western Blot in human samples; Immunocytochemistry in human samples and Immunofluorescence in human samples. All other applications and species not yet tested.
Isotype	IgG
Clonality	Polyclonal
Uniprot ID	Q08117
NCBI	NP_945320
Dilution Range	AES antibody can be used for the detection of AES by Western blot at 2 - 4 µg/mL. Antibody can also be used for immunocytochemistry starting at 10 µg/mL. For immunofluorescence start at 20 µg/mL. Antibody validated: Western Blot in human samples; Immunocytochemistry in human samples and



Western blot analysis of AES in 293 cell...



Immunocytochemistry of AES in 293 cells ...



Immunofluorescence of AES in 293 cells W...