
Product Datasheet

AGR2 Antibody (orb1240275)

Description

AGR2 Antibody

Species/Host

Rabbit

Reactivity

Human, Mouse

Conjugation

Unconjugated

Tested Applications

ELISA, IF, IHC-P, WB

Immunogen

Rabbit polyclonal AGR2 antibody was raised against a 17 amino acid peptide near the amino terminus of human AGR2. The immunogen is located within the first 50 amino acids of AGR2.

Target

AGR2

Preservatives

AGR2 Antibody is supplied in PBS containing 0.02% sodium azide.

Form/Appearance

Liquid

Concentration

1 mg/mL

Storage

AGR2 antibody can be stored at 4°C for three months and -20°C, stable for up to one year.

Note

For research use only

Application notes

AGR2 antibody can be used for detection of AGR2 by Western blot at 1 - 2 µg/mL. Antibody validated: Western Blot in human samples; Immunohistochemistry in human samples and Immunofluorescence in human samples. All other applications and species not yet tested.

Isotype

IgG

Clonality

Polyclonal

MW

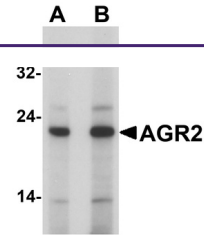
19 kDa

Uniprot ID
[O95994](#)
NCBI
[NP_006399](#)
Dilution Range

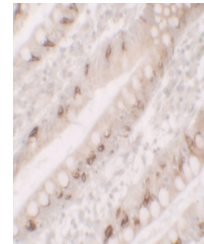
AGR2 antibody can be used for detection of AGR2 by Western blot at 1 - 2 µg/mL. Antibody validated: Western Blot in human samples; Immunohistochemistry in human samples and Immunofluorescence in human samples. All other applications and species not yet tested.

Expiration Date

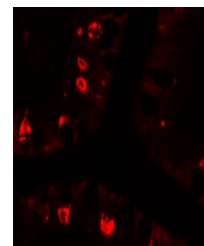
12 months from date of receipt.



Western blot analysis of AGR2 in HeLa ce...



Immunohistochemistry of AGR2 in human sm...



Immunofluorescence of AGR2 in human smal...