
Product Datasheet

AIFM3 Antibody (orb1240268)

Description

AIFM3 Antibody

Species/Host

Rabbit

Reactivity

Human, Mouse, Rat

Conjugation

Unconjugated

Tested Applications

ELISA, IF, IHC-P, WB

Immunogen

AIFM3 antibody was raised against a 16 amino acid synthetic peptide from near the amino terminus of human AIFM3. The immunogen is located within the first 50 amino acids of AIFM3.

Target

AIFM3

Preservatives

AIFM3 Antibody is supplied in PBS containing 0.02% sodium azide.

Form/Appearance

Liquid

Concentration

1 mg/mL

Storage

AIFM3 antibody can be stored at 4°C for three months and -20°C, stable for up to one year. As with all antibodies care should be taken to avoid repeated freeze thaw cycles. Antibodies should not be exposed to prolonged high temperatures.

Note

For research use only

Application notes

AIFM3 antibody can be used for the detection of AIFM3 by Western blot at 0.5 and 1 µg/mL. Antibody can also be used for immunohistochemistry starting at 2.5 µg/mL. For immunofluorescence start at 20 µg/mL. Antibody validated: Western Blot in human samples; Immunohistochemistry in human samples and Immunofluorescence in human samples. All other applications and species not yet tested.

Isotype

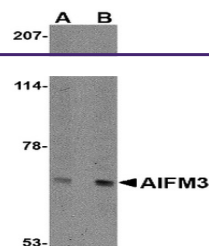
IgG

Clonality

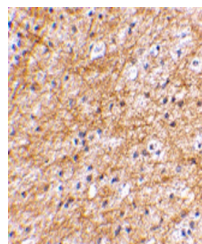
Polyclonal

Uniprot ID
[Q96NN9](#)
NCBI
[Q96NN9](#)
Dilution Range

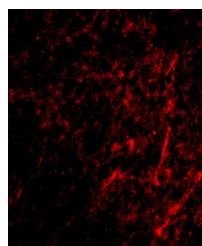
AIFM3 antibody can be used for the detection of AIFM3 by Western blot at 0.5 and 1 µg/mL. Antibody can also be used for immunohistochemistry starting at 2.5 µg/mL. For immunofluorescence start at 20 µg/mL. Antibody validated: Western Blot in human samples; Immunohistochemistry in human samples



Western blot analysis of NIPSNAP in huma...



Immunohistochemical staining of human br...



Immunofluorescence of AIFM3 in human bra...