
Product Datasheet

CD5L Antibody (orb1240266)

Description

CD5L Antibody

Species/Host

Rabbit

Reactivity

Human, Mouse

Conjugation

Unconjugated

Tested Applications

ELISA, IHC-P, WB

Immunogen

AIM antibody was raised against a 13 amino acid synthetic peptide near the carboxy terminus of human AIM. The immunogen is located within amino acids 250 - 300 of AIM.

Target

CD5L

Preservatives

AIM Antibody is supplied in PBS containing 0.02% sodium azide.

Form/Appearance

Liquid

Concentration

1 mg/mL

Storage

AIM antibody can be stored at 4°C for three months and -20°C, stable for up to one year. As with all antibodies care should be taken to avoid repeated freeze thaw cycles. Antibodies should not be exposed to prolonged high temperatures.

Note

For research use only

Application notes

AIM antibody can be used for the detection of AIM by Western blot at 0.5 - 2 µg/mL. Antibody can also be used for immunohistochemistry starting at 10 µg/mL. Antibody validated: Western Blot in human samples and Immunohistochemistry in human samples. All other applications and species not yet tested.

Isotype

IgG

Clonality

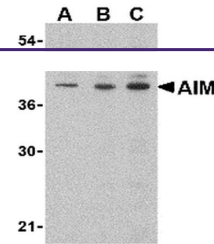
Polyclonal

Uniprot ID
[O43866](#)
NCBI
[AAD01446](#)
Dilution Range

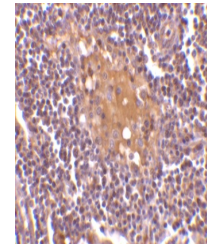
AIM antibody can be used for the detection of AIM by Western blot at 0.5 - 2 µg/mL. Antibody can also be used for immunohistochemistry starting at 10 µg/mL. Antibody validated: Western Blot in human samples and Immunohistochemistry in human samples. All other applications and species not yet tested.

Expiration Date

12 months from date of receipt.



Western blot analysis of AIM in Raji lys...



Immunohistochemistry of AIM in human lym...