
Product Datasheet

CD5L Antibody (orb1240265)

Description

CD5L Antibody

Species/Host

Rabbit

Reactivity

Human

Conjugation

Unconjugated

Tested Applications

ELISA, IF, IHC-P, WB

Immunogen

AIM antibody was raised against a 16 amino acid synthetic peptide near the amino terminus of human AIM. The immunogen is located within amino acids 60 - 110 of AIM.

Target

CD5L

Preservatives

AIM Antibody is supplied in PBS containing 0.02% sodium azide.

Form/Appearance

Liquid

Concentration

1 mg/mL

Storage

AIM antibody can be stored at 4°C for three months and -20°C, stable for up to one year. As with all antibodies care should be taken to avoid repeated freeze thaw cycles. Antibodies should not be exposed to prolonged high temperatures.

Note

For research use only

Application notes

AIM antibody can be used for the detection of AIM by Western blot at 1 - 4 µg/mL. Antibody can also be used for immunohistochemistry starting at 2 µg/mL. For immunofluorescence start at 20 µg/mL. Antibody validated: Western Blot in human samples; Immunohistochemistry in human samples and Immunofluorescence in human samples. All other applications and species not yet tested.

Isotype

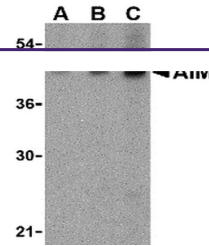
IgG

Clonality

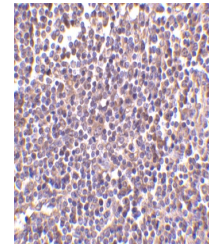
Polyclonal

Uniprot ID
O43866
NCBI
AAD01446
Dilution Range

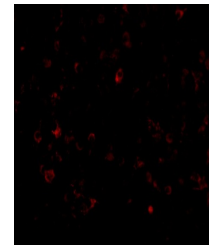
AIM antibody can be used for the detection of AIM by Western blot at 1 - 4 µg/mL. Antibody can also be used for immunohistochemistry starting at 2 µg/mL. For immunofluorescence start at 20 µg/mL. Antibody validated: Western Blot in human samples; Immunohistochemistry in human samples and



Western blot analysis of AIM in human ly...



Immunohistochemistry of AIM in human lym...



Immunofluorescence of AIM in Human Lymph...