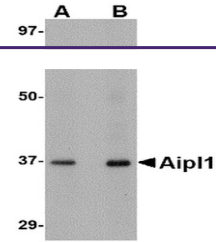
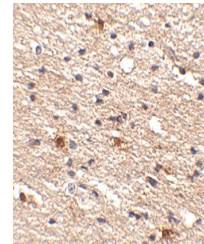

Product Datasheet

AIPL1 Antibody (orb1240262)

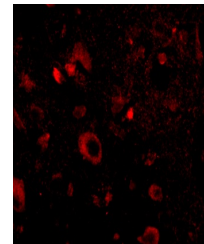
Description	AiPL1 Antibody
Species/Host	Rabbit
Reactivity	Human, Mouse
Conjugation	Unconjugated
Tested Applications	ELISA, IF, IHC-P, WB
Immunogen	AiPL1 antibody was raised against a 17 amino acid synthetic peptide near the carboxy terminus of the human AiPL1. The immunogen is located within amino acids 290 - 340 of AiPL1.
Target	AiPL1
Preservatives	AiPL1 Antibody is supplied in PBS containing 0.02% sodium azide.
Form/Appearance	Liquid
Concentration	1 mg/mL
Storage	AiPL1 antibody can be stored at 4°C for three months and -20°C, stable for up to one year. As with all antibodies care should be taken to avoid repeated freeze thaw cycles. Antibodies should not be exposed to prolonged high temperatures.
Note	For research use only
Application notes	AiPL1 antibody can be used for detection of AiPL1 by Western blot at 1 - 2 µg/mL. Antibody can also be used for immunohistochemistry starting at 2.5 µg/mL. For immunofluorescence start at 20 µg/mL. Antibody validated: Western Blot in human samples; Immunohistochemistry in human samples and Immunofluorescence in human samples. All other applications and species not yet tested.
Isotype	IgG
Clonality	Polyclonal
Uniprot ID	Q9NZN9
NCBI	NP_055151
Dilution Range	AiPL1 antibody can be used for detection of AiPL1 by Western blot at 1 - 2 µg/mL. Antibody can also be used for immunohistochemistry starting at 2.5 µg/mL. For immunofluorescence start at 20 µg/mL. Antibody validated: Western Blot in human samples; Immunohistochemistry in human samples



Western blot analysis of AiPL1 in human ...



Immunohistochemistry of AiPL1 in human b...



Immunofluorescence of aiPL1 in human bra...