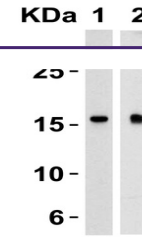
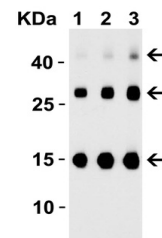

Product Datasheet

TSLP Antibody (orb1240256)

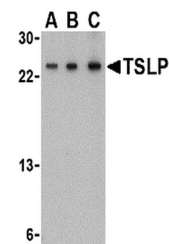
Description	TSLP Antibody
Species/Host	Rabbit
Reactivity	Human, Mouse
Conjugation	Unconjugated
Tested Applications	ELISA, IF, IHC-P, WB
Immunogen	Anti-TSLP antibody (orb1240256) was raised against a peptide corresponding to 19 amino acids near the center of human TSLP. The immunogen is located within the amino acids 40-90 of TSLP.
Target	TSLP
Preservatives	TSLP Antibody is supplied in PBS containing 0.02% sodium azide.
Form/Appearance	Liquid
Concentration	1 mg/mL
Storage	TSLP antibody can be stored at 4°C up to one year. Antibodies should not be exposed to prolonged high temperatures.
Note	For research use only
Isotype	IgG
Clonality	Polyclonal
MW	Predicted: 18 kD Observed: 17, 24 kD (Post-modifications: 2 N linked glycosylations)
Uniprot ID	Q969D9
NCBI	NP_149024
Dilution Range	WB: 0.25 - 4 µg/mL; IHC-P: 2.5 µg/mL; IF: 20 µg/mL. Antibody validated: Western Blot in human and mouse samples; Immunohistochemistry and Immunofluorescence in human and mouse samples; Immunocytochemistry in human samples. All other applications and species not yet tested.
Expiration Date	12 months from date of receipt.



Western Blot Validation in Human Heart (...)



Western Blot Validation of TSLP with Hum...



Western Blot Validation in Mouse A-20 Ce...