

---

## Product Datasheet

### ALKBH2 Antibody (orb1240255)

**Description**

ALKBH2 Antibody

**Species/Host**

Rabbit

**Reactivity**

Human, Mouse, Rat

**Conjugation**

Unconjugated

**Tested**

ELISA, IHC-P, WB

**Applications**
**Immunogen**

ALKBH2 antibody was raised against a 15 amino acid synthetic peptide near the carboxy terminus of human ALKBH2. The immunogen is located within amino acids 180 - 230 of ALKBH2.

**Target**

ALKBH2

**Preservatives**

ALKBH2 Antibody is supplied in PBS containing 0.02% sodium azide.

**Form/Appearance**

Liquid

**Concentration**

1 mg/mL

**Storage**

ALKBH2 antibody can be stored at 4°C for three months and -20°C, stable for up to one year. As with all antibodies care should be taken to avoid repeated freeze thaw cycles. Antibodies should not be exposed to prolonged high temperatures.

**Note**

For research use only

**Application notes**

ALKBH2 antibody can be used for detection of ALKBH2 by Western blot at 1 - 2 µg/mL. Antibody can also be used for immunohistochemistry starting at 10 µg/mL. Antibody validated: Western Blot in human samples and Immunohistochemistry in human samples. All other applications and species not yet tested.

**Isotype**

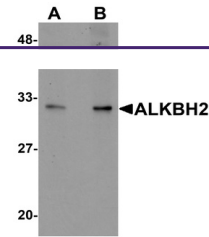
IgG

**Clonality**

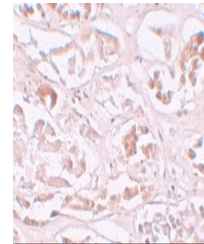
Polyclonal

**Uniprot ID**
[Q6NS38](#)
**NCBI**
[NP\\_001138847](#)
**Dilution Range**

ALKBH2 antibody can be used for detection of ALKBH2 by Western blot at 1 - 2 µg/mL. Antibody can also be used for immunohistochemistry starting at 10 µg/mL. Antibody validated: Western Blot in human samples and Immunohistochemistry in human samples. All other applications and species not yet tested.



Western blot analysis of ALKBH2 in human...



Immunohistochemistry of ALKBH2 in human

...