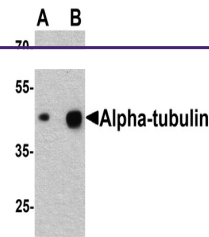
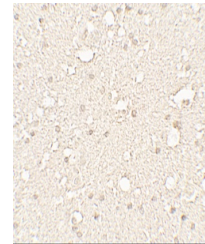

Product Datasheet

TUBA3C Antibody (orb1240254)

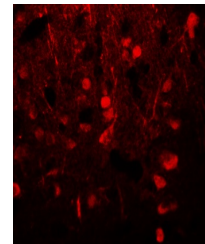
Description	TUBA3C Antibody
Species/Host	Rabbit
Reactivity	Human, Mouse, Rat
Conjugation	Unconjugated
Tested Applications	ELISA, IF, IHC-P, WB
Immunogen	Alpha-tubulin antibody was raised against an 18 amino acid peptide near the amino terminus of human alpha-tubulin. The immunogen is located within the first 50 amino acids of Alpha-tubulin.
Target	TUBA3C
Preservatives	Alpha-tubulin antibody is supplied in PBS containing 0.02% sodium azide.
Form/Appearance	Liquid
Concentration	1 mg/mL
Storage	Alpha-tubulin antibody can be stored at 4°C for three months and -20°C, stable for up to one year.
Note	For research use only
Application notes	Alpha-tubulin antibody can be used for detection of alpha-tubulin by Western blot at 0.25 - 0.5 µg/ml. Antibody can also be used for Immunohistochemistry starting at 5 µg/mL. For immunofluorescence start at 20 µg/mL. Antibody validated: Western Blot in human samples; Immunohistochemistry in human samples and Immunofluorescence in human samples. All other applications and species not yet tested.
Isotype	IgG
Clonality	Polyclonal
MW	Predicted: 50 kDa Observed: 45 kDa
Uniprot ID	Q13748
NCBI	NP_005992
Dilution Range	Alpha-tubulin antibody can be used for detection of alpha-tubulin by Western blot at 0.25 - 0.5 µg/ml. Antibody can also be used for Immunohistochemistry starting at 5 µg/mL. For immunofluorescence start at 20 µg/mL. Antibody validated: Western Blot in human samples; Immunohistochemistry in human samples and



Western blot analysis of alpha-tubulin i...



Immunohistochemistry of Alpha-tubulin in...



Immunofluorescence of Alpha-tubulin in h...