
Product Datasheet

AMBRA1 Antibody (orb1240250)

Description

AMBRA1 Antibody

Species/Host

Rabbit

Reactivity

Human, Mouse

Conjugation

Unconjugated

Tested

ELISA, IF, IHC-P, WB

Applications
Immunogen

Ambra1 antibody was raised against a 18 amino acid synthetic peptide from near the amino terminus of human Ambra1. The immunogen is located within the first 50 amino acids of Ambra1.

Target

AMBRA1

Preservatives

Ambra1 Antibody is supplied in PBS containing 0.02% sodium azide.

Form/Appearance

Liquid

Concentration

1 mg/mL

Storage

Ambra1 antibody can be stored at 4°C for three months and -20°C, stable for up to one year. As with all antibodies care should be taken to avoid repeated freeze thaw cycles. Antibodies should not be exposed to prolonged high temperatures.

Note

For research use only

Application notes

Ambra1 antibody can be used for the detection of Ambra1 by Western blot at 2 µg/mL. Antibody can also be used for immunohistochemistry starting at 5 µg/mL. For immunofluorescence start at 20 µg/mL. Antibody validated: Western Blot in rat samples; Immunohistochemistry in human samples and Immunofluorescence in human samples. All other applications and species not yet tested.

Isotype

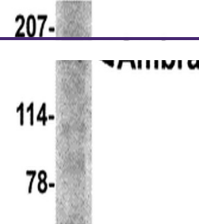
IgG

Clonality

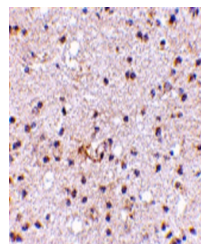
Polyclonal

Uniprot ID
[Q9C0C7](#)
NCBI
[Q9C0C7](#)
Dilution Range

Ambra1 antibody can be used for the detection of Ambra1 by Western blot at 2 µg/mL. Antibody can also be used for immunohistochemistry starting at 5 µg/mL. For immunofluorescence start at 20 µg/mL. Antibody validated: Western Blot in rat samples; Immunohistochemistry in human samples

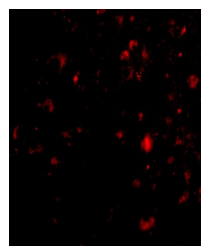


Western blot analysis of Ambra1 in rat b...



Immunohistochemistry of Ambra1 in human

...



Immunofluorescence of Ambra1 in Human Br...