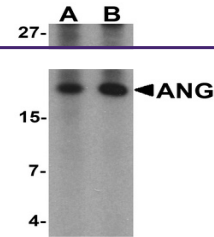
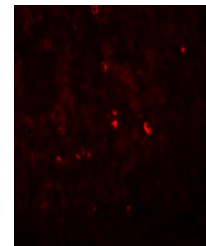

Product Datasheet

ANG Antibody (orb1240248)

Description	ANG Antibody
Species/Host	Rabbit
Reactivity	Human, Mouse, Rat
Conjugation	Unconjugated
Tested Applications	ELISA, IF, WB
Immunogen	ANG antibody was raised against a 15 amino acid synthetic peptide near the center of human ANG. The immunogen is located within amino acids 70 - 120 of ANG.
Target	ANG
Preservatives	ANG Antibody is supplied in PBS containing 0.02% sodium azide.
Form/Appearance	Liquid
Concentration	1 mg/mL
Storage	ANG antibody can be stored at 4°C for three months and -20°C, stable for up to one year. As with all antibodies care should be taken to avoid repeated freeze thaw cycles. Antibodies should not be exposed to prolonged high temperatures.
Note	For research use only
Application notes	ANG antibody can be used for detection of ANG by Western blot at 1 - 2 µg/mL. For immunofluorescence start at 20 µg/mL. Antibody validated: Western Blot in rat samples and Immunofluorescence in human samples. All other applications and species not yet tested.
Isotype	IgG
Clonality	Polyclonal
MW	16 kDa
Uniprot ID	P03950
NCBI	NP_001136
Dilution Range	ANG antibody can be used for detection of ANG by Western blot at 1 - 2 µg/mL. For immunofluorescence start at 20 µg/mL. Antibody validated: Western Blot in rat samples and Immunofluorescence in human samples. All other applications and species not yet tested.



Western blot analysis of ANG in rat live...



Immunofluorescence of ANG in human liver...