
Product Datasheet

APBA2 Antibody (orb1240236)

Description

APBA2 Antibody

Species/Host

Rabbit

Reactivity

Human

Conjugation

Unconjugated

Tested

ELISA, IF, IHC-P, WB

Applications
Immunogen

APBA2 antibody was raised against an 18 amino acid synthetic peptide near the center of human APBA2. The immunogen is located within amino acids 290 - 340 of APBA2.

Target

APBA2

Preservatives

APBA2 Antibody is supplied in PBS containing 0.02% sodium azide.

Form/Appearance

Liquid

Concentration

1 mg/mL

Storage

APBA2 antibody can be stored at 4°C for three months and -20°C, stable for up to one year. As with all antibodies care should be taken to avoid repeated freeze thaw cycles. Antibodies should not be exposed to prolonged high temperatures.

Note

For research use only

Application notes

APBA2 antibody can be used for detection of APBA2 by Western blot at 1 - 2 µg/mL. Antibody can also be used for immunohistochemistry starting at 10 µg/mL. For immunofluorescence start at 20 µg/mL. Antibody validated: Western Blot in human samples; Immunohistochemistry in human samples and Immunofluorescence in human samples. All other applications and species not yet tested.

Isotype

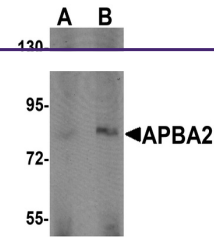
IgG

Clonality

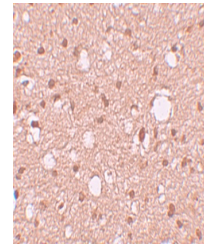
Polyclonal

Uniprot ID
[Q99767](#)
NCBI
[NP_005494](#)
Dilution Range

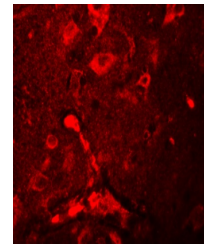
APBA2 antibody can be used for detection of APBA2 by Western blot at 1 - 2 µg/mL. Antibody can also be used for immunohistochemistry starting at 10 µg/mL. For immunofluorescence start at 20 µg/mL. Antibody validated: Western Blot in human samples; Immunohistochemistry in human samples and



Western blot analysis of APBA2 in human ...



Immunohistochemistry of APBA2 in human b...



Immunofluorescence of APBA2 in human bra...