
Product Datasheet

ANAPC10 Antibody (orb1240235)

Description

ANAPC10 Antibody

Species/Host

Rabbit

Reactivity

Human, Mouse, Rat

Conjugation

Unconjugated

Tested Applications

ELISA, IF, IHC-P, WB

Immunogen

APC10 antibody was raised against a 16 amino acid synthetic peptide near the center of human APC10. The immunogen is located within amino acids 60 - 110 of APC10.

Target

ANAPC10

Preservatives

APC10 Antibody is supplied in PBS containing 0.02% sodium azide.

Form/Appearance

Liquid

Concentration

1 mg/mL

Storage

APC10 antibody can be stored at 4°C for three months and -20°C, stable for up to one year. As with all antibodies care should be taken to avoid repeated freeze thaw cycles. Antibodies should not be exposed to prolonged high temperatures.

Note

For research use only

Application notes

APC10 antibody can be used for detection of APC10 by Western blot at 1 - 2 µg/mL. Antibody can also be used for immunohistochemistry starting at 5 µg/mL. For immunofluorescence start at 20 µg/mL. Antibody validated: Western Blot in mouse samples; Immunohistochemistry in mouse samples and Immunofluorescence in mouse samples. All other applications and species not yet tested.

Isotype

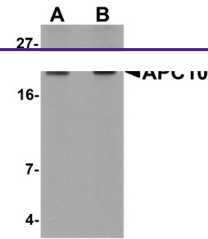
IgG

Clonality

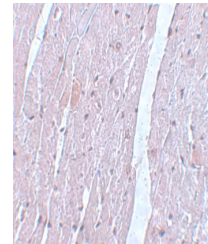
Polyclonal

Uniprot ID
[Q9UM13](#)
NCBI
[EAX05052](#)
Dilution Range

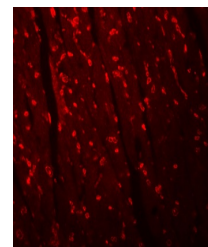
APC10 antibody can be used for detection of APC10 by Western blot at 1 - 2 µg/mL. Antibody can also be used for immunohistochemistry starting at 5 µg/mL. For immunofluorescence start at 20 µg/mL. Antibody validated: Western Blot in mouse samples; Immunohistochemistry in mouse samples and



Western blot analysis of APC10 in mouse ...



Immunohistochemistry of APC10 in mouse h...



Immunofluorescence of APC10 in mouse hea...