
Product Datasheet

APC2 Antibody (orb1240231)

Description

APC2 Antibody

Species/Host

Rabbit

Reactivity

Human, Mouse

Conjugation

Unconjugated

Tested Applications

ELISA, ICC, IF, WB

Immunogen

APC2 antibody was raised against an 18 amino acid synthetic peptide near the center of human APC2. The immunogen is located within amino acids 240 - 290 of APC2.

Target

APC2

Preservatives

APC2 Antibody is supplied in PBS containing 0.02% sodium azide.

Form/Appearance

Liquid

Concentration

1 mg/mL

Storage

APC2 antibody can be stored at 4°C for three months and -20°C, stable for up to one year. As with all antibodies care should be taken to avoid repeated freeze thaw cycles. Antibodies should not be exposed to prolonged high temperatures.

Note

For research use only

Application notes

APC2 antibody can be used for detection of APC2 by Western blot at 1 - 2 µg/mL. Antibody can also be used for immunocytochemistry starting at 5 µg/mL. For immunofluorescence start at 20 µg/mL. Antibody validated: Western Blot in human samples; Immunocytochemistry in human samples and Immunofluorescence in human samples. All other applications and species not yet tested.

Isotype

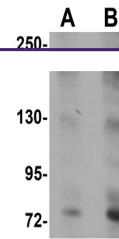
IgG

Clonality

Polyclonal

Uniprot ID
O95996
NCBI
BAA34611
Dilution Range

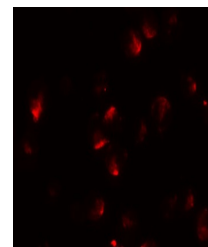
APC2 antibody can be used for detection of APC2 by Western blot at 1 - 2 µg/mL. Antibody can also be used for immunocytochemistry starting at 5 µg/mL. For immunofluorescence start at 20 µg/mL. Antibody validated: Western Blot in human samples; Immunocytochemistry in human samples and



Western blot analysis of APC2 in HeLa ce...



Immunocytochemistry of APC2 in HeLa cell...



Immunofluorescence of APC2 in HeLa cells...