
Product Datasheet

ANAPC5 Antibody (orb1240228)

Description

ANAPC5 Antibody

Species/Host

Rabbit

Reactivity

Human, Mouse, Rat

Conjugation

Unconjugated

Tested Applications

ELISA, IF, IHC-P, WB

Immunogen

APC5 antibody was raised against a 17 amino acid synthetic peptide near the center of human APC5. The immunogen is located within amino acids 480 - 530 of APC5.

Target

ANAPC5

Preservatives

APC5 Antibody is supplied in PBS containing 0.02% sodium azide.

Form/Appearance

Liquid

Concentration

1 mg/mL

Storage

APC5 antibody can be stored at 4°C for three months and -20°C, stable for up to one year. As with all antibodies care should be taken to avoid repeated freeze thaw cycles. Antibodies should not be exposed to prolonged high temperatures.

Note

For research use only

Application notes

APC5 antibody can be used for detection of APC5 by Western blot at 1 - 2 µg/mL. Antibody can also be used for immunohistochemistry starting at 5 µg/mL. For immunofluorescence start at 20 µg/mL. Antibody validated: Western Blot in human samples; Immunohistochemistry in rat samples and Immunofluorescence in rat samples. All other applications and species not yet tested.

Isotype

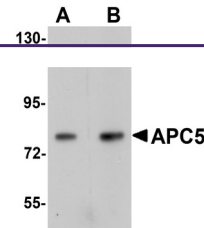
IgG

Clonality

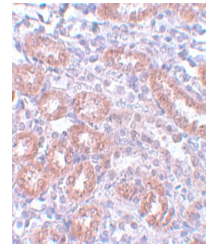
Polyclonal

Uniprot ID
[Q9UJX4](#)
NCBI
[Q9UJX4](#)
Dilution Range

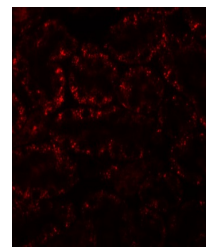
APC5 antibody can be used for detection of APC5 by Western blot at 1 - 2 µg/mL. Antibody can also be used for immunohistochemistry starting at 5 µg/mL. For immunofluorescence start at 20 µg/mL. Antibody validated: Western Blot in human samples; Immunohistochemistry in rat samples and



Western blot analysis of APC5 in human k...



Immunohistochemistry of APC5 in rat kidn...



Immunofluorescence of APC5 in rat kidney...