

## Product Datasheet

### CDC16 Antibody (orb1240227)

**Description**

CDC16 Antibody

**Species/Host**

Rabbit

**Reactivity**

Human, Mouse

**Conjugation**

Unconjugated

**Tested**

ELISA, IF, IHC-P, WB

**Applications**
**Immunogen**

APC6 antibody was raised against an 18 amino acid synthetic peptide near the amino terminus of human APC6. The immunogen is located within the first 50 amino acids of APC6.

**Target**

CDC16

**Preservatives**

APC6 Antibody is supplied in PBS containing 0.02% sodium azide.

**Form/Appearance**

Liquid

**Concentration**

1 mg/mL

**Storage**

APC6 antibody can be stored at 4°C for three months and -20°C, stable for up to one year. As with all antibodies care should be taken to avoid repeated freeze thaw cycles. Antibodies should not be exposed to prolonged high temperatures.

**Note**

For research use only

**Application notes**

APC6 antibody can be used for detection of APC6 by Western blot at 1 - 2 µg/mL. Antibody can also be used for immunohistochemistry starting at 5 µg/mL. For immunofluorescence start at 20 µg/mL. Antibody validated: Western Blot in human samples; Immunohistochemistry in human samples and Immunofluorescence in human samples. All other applications and species not yet tested.

**Isotype**

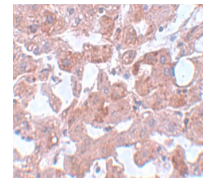
IgG

**Clonality**

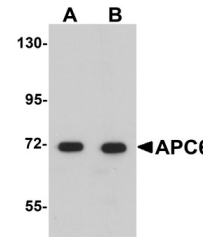
Polyclonal

**Uniprot ID**
[Q13042](#)
**NCBI**
[NP\\_003894](#)
**Dilution Range**

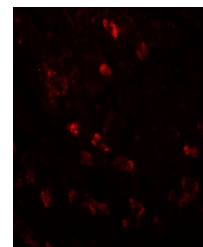
APC6 antibody can be used for detection of APC6 by Western blot at 1 - 2 µg/mL. Antibody can also be used for immunohistochemistry starting at 5 µg/mL. For immunofluorescence start at 20 µg/mL. Antibody validated: Western Blot in human samples; Immunohistochemistry in human samples and



Immunohistochemistry of APC6 in human li...



Western blot analysis of APC6 in human l...



Immunofluorescence of APC6 in human live...