

---

## Product Datasheet

### ANAPC7 Antibody (orb1240226)

**Description**

ANAPC7 Antibody

**Species/Host**

Rabbit

**Reactivity**

Human, Mouse, Rat

**Conjugation**

Unconjugated

**Tested**

ELISA, IF, WB

**Applications**
**Immunogen**

APC7 antibody was raised against an 18 amino acid synthetic peptide near the carboxy terminus of human APC7. The immunogen is located within amino acids 520 - 570 of APC7.

**Target**

ANAPC7

**Preservatives**

APC7 Antibody is supplied in PBS containing 0.02% sodium azide.

**Form/Appearance**

Liquid

**Concentration**

1 mg/mL

**Storage**

APC7 antibody can be stored at 4°C for three months and -20°C, stable for up to one year. As with all antibodies care should be taken to avoid repeated freeze thaw cycles. Antibodies should not be exposed to prolonged high temperatures.

**Note**

For research use only

**Application notes**

APC7 antibody can be used for detection of APC7 by Western blot at 1 - 2 µg/mL. Antibody can also be used for immunofluorescence starting at 20 µg/mL. For immunofluorescence start at 20 µg/mL. Antibody validated: Western Blot in human samples and Immunofluorescence in rat samples. All other applications and species not yet tested.

**Isotype**

IgG

**Clonality**

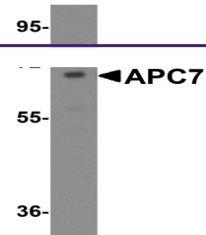
Polyclonal

**MW**

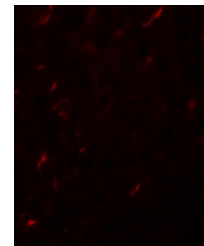
Predicted: 66 kDa Observed: 68 kDa

**Uniprot ID**
[Q9UJX3](#)
**NCBI**
[NP\\_057322](#)
**Dilution Range**

APC7 antibody can be used for detection of APC7 by Western blot at 1 - 2 µg/mL. Antibody can also be used for immunofluorescence starting at 20 µg/mL. For immunofluorescence start at 20 µg/mL. Antibody validated: Western Blot in human samples and Immunofluorescence in rat samples. All other



Western blot analysis of APC7 in HeLa ce...



Immunofluorescence of APC7 in rat kidney...