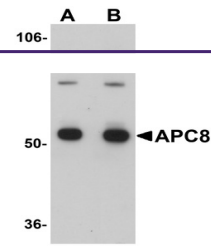
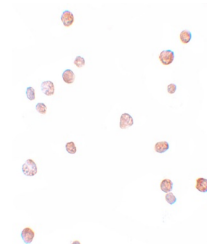

Product Datasheet

CDC23 Antibody (orb1240225)

Description	CDC23 Antibody
Species/Host	Rabbit
Reactivity	Human, Mouse, Rat
Conjugation	Unconjugated
Tested Applications	ELISA, ICC, WB
Immunogen	APC8 antibody was raised against a 17 amino acid synthetic peptide near the center of human APC8. The immunogen is located within amino acids 270 - 320 of APC8.
Target	CDC23
Preservatives	APC8 Antibody is supplied in PBS containing 0.02% sodium azide.
Form/Appearance	Liquid
Concentration	1 mg/mL
Storage	APC8 antibody can be stored at 4°C for three months and -20°C, stable for up to one year. As with all antibodies care should be taken to avoid repeated freeze thaw cycles. Antibodies should not be exposed to prolonged high temperatures.
Note	For research use only
Application notes	APC8 antibody can be used for detection of APC8 by Western blot at 1 - 2 µg/mL. Antibody can also be used for immunocytochemistry starting at 5 µg/mL. Antibody validated: Western Blot in human samples and Immunocytochemistry in human samples. All other applications and species not yet tested.
Isotype	IgG
Clonality	Polyclonal
Uniprot ID	Q9UJX2
NCBI	Q9UJX2
Dilution Range	APC8 antibody can be used for detection of APC8 by Western blot at 1 - 2 µg/mL. Antibody can also be used for immunocytochemistry starting at 5 µg/mL. Antibody validated: Western Blot in human samples and Immunocytochemistry in human samples. All other applications and species not yet tested.
Expiration Date	12 months from date of receipt.



Western blot analysis of APC8 in K562 ce...



Immunocytochemistry of APC8 in K562 cell...