
Product Datasheet

ATG7 Antibody (orb1240224)

Description

ATG7 Antibody

Species/Host

Rabbit

Reactivity

Human, Mouse

Conjugation

Unconjugated

Tested Applications

ELISA, ICC, IF, WB

Immunogen

APG7 antibody was raised against a 17 amino acid synthetic peptide from near the carboxy terminus of human APG7. The immunogen is located within amino acids 590 - 640 of APG7.

Target

ATG7

Preservatives

APG7 Antibody is supplied in PBS containing 0.02% sodium azide.

Form/Appearance

Liquid

Concentration

1 mg/mL

Storage

APG7 antibody can be stored at 4°C for three months and -20°C, stable for up to one year. As with all antibodies care should be taken to avoid repeated freeze thaw cycles. Antibodies should not be exposed to prolonged high temperatures.

Note

For research use only

Application notes

APG7 antibody can be used for the detection of APG7 by Western blot at 0.5 - 2 µg/mL. Antibody can also be used for immunocytochemistry starting at 10 µg/mL. For immunofluorescence start at 20 µg/mL. Antibody validated: Western Blot in human samples; Immunocytochemistry in human samples and Immunofluorescence in human samples. All other applications and species not yet tested.

Isotype

IgG

Clonality

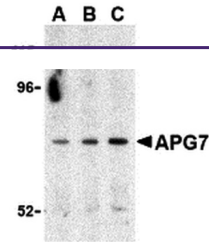
Polyclonal

MW

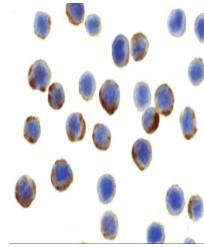
Predicted: 69, 74, 77 kDa Observed: 77 kDa

Uniprot ID
[O95352](#)
NCBI
[NP_006386](#)
Dilution Range

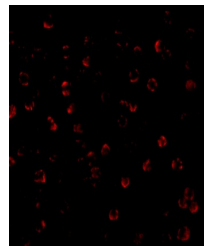
APG7 antibody can be used for the detection of APG7 by Western blot at 0.5 - 2 µg/mL. Antibody can also be used for immunocytochemistry starting at 10 µg/mL. For immunofluorescence start at 20 µg/mL. Antibody validated: Western Blot in human



Western blot analysis of APG7 in Caco-2 ...



Immunocytochemistry of APG7 in MCF7 cell...



Immunofluorescence of APG7 in MCF7 cells...