

---

## Product Datasheet

### APOBEC3B Antibody (orb1240220)

**Description**

APOBEC3B Antibody

**Species/Host**

Rabbit

**Reactivity**

Human

**Conjugation**

Unconjugated

**Tested**

ELISA, IF, IHC-P, WB

**Applications**
**Immunogen**

APOBEC3B antibody was raised against a 14 amino acid peptide near the amino terminus of human APOBEC3B. The immunogen is located within amino acids 20 - 70 of APOBEC3B.

**Target**

APOBEC3B

**Preservatives**

APOBEC3B Antibody is supplied in PBS containing 0.02% sodium azide.

**Form/Appearance**

Liquid

**Concentration**

1 mg/mL

**Storage**

APOBEC3B antibody can be stored at 4°C up to one year. Antibodies should not be exposed to prolonged high temperatures.

**Note**

For research use only

**Application notes**

APOBEC3B antibody can be used for detection of APOBEC3B by Western blot at 1 - 2 µg/ml. Antibody can also be used for Immunohistochemistry at 5 µg/mL. For Immunofluorescence start at 20 µg/mL. Antibody validated: Western Blot in human samples; Immunohistochemistry in human samples and Immunofluorescence in human samples. All other applications and species not yet tested.

**Isotype**

IgG

**Clonality**

Polyclonal

**MW**

Predicted: 42 kDa Observed: 48 kDa

**Uniprot ID**
[Q9UH17](#)
**NCBI**
[NP\\_004891](#)
**Dilution Range**

APOBEC3B antibody can be used for detection of APOBEC3B by Western blot at 1 - 2 µg/ml. Antibody can also be used for Immunohistochemistry at 5 µg/mL. For Immunofluorescence start at 20 µg/mL. Antibody validated: Western Blot in human samples; Immunohistochemistry in human samples and Immunofluorescence in human samples. All other applications and species not yet tested.

KDa

95 -

55 -

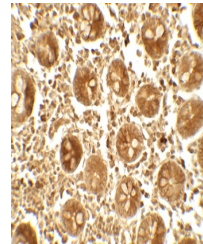
36 -

28 -

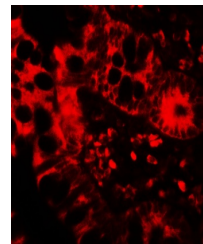
17 -

← APOBEC3B

Western blot analysis of APOBEC3B in Hep...



Immunohistochemistry of APOBEC3B in huma...



Immunofluorescence of APOBEC3B in human ...