

---

## Product Datasheet

### AQP2 Antibody (orb1240211)

**Description**

AQP2 Antibody

**Species/Host**

Rabbit

**Reactivity**

Human, Mouse, Rat

**Conjugation**

Unconjugated

**Tested Applications**

ELISA, IF, IHC-P, WB

**Immunogen**

AQP2 antibody was raised against a 19 amino acid peptide near the carboxy terminus of human AQP2. The immunogen is located within the last 50 amino acids of AQP2.

**Target**

AQP2

**Preservatives**

AQP2 antibody is supplied in PBS containing 0.02% sodium azide.

**Form/Appearance**

Liquid

**Concentration**

1 mg/mL

**Storage**

AQP2 antibody can be stored at 4°C for three months and -20°C, stable for up to one year.

**Note**

For research use only

**Application notes**

AQP2 antibody can be used for detection of AQP2 by Western blot at 1 µg/ml. Antibody can also be used for Immunohistochemistry starting at 5 µg/mL. For immunofluorescence start at 20 µg/mL. Antibody validated: Western Blot in human samples; Immunohistochemistry in human samples and Immunofluorescence in human samples. All other applications and species not yet tested.

**Isotype**

IgG

**Clonality**

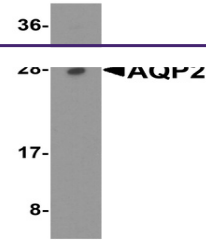
Polyclonal

**MW**

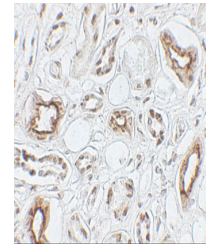
Predicted: 30 kDa Observed: 28 kDa

**Uniprot ID**
[P41181](#)
**NCBI**
[NP\\_000477](#)
**Dilution Range**

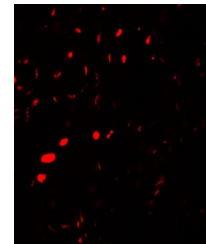
AQP2 antibody can be used for detection of AQP2 by Western blot at 1 µg/ml. Antibody can also be used for Immunohistochemistry starting at 5 µg/mL. For immunofluorescence start at 20 µg/mL. Antibody validated: Western Blot in human samples; Immunohistochemistry in human samples and Immunofluorescence in human samples. All other applications and species not yet tested.



Western blot analysis of AQP2 in A431 ce...



Immunohistochemistry of AQP2 in human ki...



Immunofluorescence of AQP2 in human kidn...