
Product Datasheet

HUWE1 Antibody (orb1240208)

Description

HUWE1 Antibody

Species/Host

Rabbit

Reactivity

Human, Mouse, Rat

Conjugation

Unconjugated

Tested Applications

ELISA, ICC, IF, WB

Immunogen

ARF-BP1 antibody was raised against a 19 amino acid synthetic peptide from near the carboxy terminus of human ARF-BP1. The immunogen is located within amino acids 4250 - 4300 of ARF-BP1.

Target

HUWE1

Preservatives

ARF-BP1 Antibody is supplied in PBS containing 0.02% sodium azide.

Form/Appearance

Liquid

Concentration

1 mg/mL

Storage

ARF-BP1 antibody can be stored at 4°C up to one year. Antibodies should not be exposed to prolonged high temperatures.

Note

For research use only

Application notes

ARF-BP1 antibody can be used for detection of ARF-BP1 by Western blot at 1 µg/mL. Antibody can also be used for immunocytochemistry starting at 5 µg/mL. For immunofluorescence start at 20 µg/mL. Antibody validated: Western Blot in human samples; Immunocytochemistry in human samples and Immunofluorescence in human samples. All other applications and species not yet tested.

Isotype

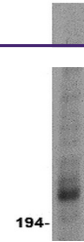
IgG

Clonality

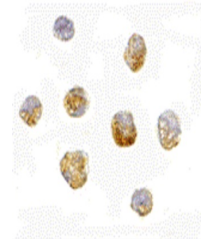
Polyclonal

Uniprot ID
[Q7Z6Z7](#)
NCBI
[NP_113584](#)
Dilution Range

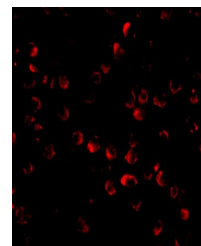
ARF-BP1 antibody can be used for detection of ARF-BP1 by Western blot at 1 µg/mL. Antibody can also be used for immunocytochemistry starting at 5 µg/mL. For immunofluorescence start at 20 µg/mL. Antibody validated: Western Blot in human samples; Immunocytochemistry in human samples and Immunofluorescence in human samples. All other applications and species not yet tested.



Western blot analysis of ARF-BP1 in Daudi...



Immunocytochemistry of ARF-BP1 in Daudi...



Immunofluorescence of ARF-BP1 in Daudi...