
Product Datasheet

ARL15 Antibody (orb1240205)

Description

ARL15 Antibody

Species/Host

Rabbit

Reactivity

Human, Mouse, Rat

Conjugation

Unconjugated

Tested Applications

ELISA, IHC-P, WB

Immunogen

ARL15 antibody was raised against a 17 amino acid synthetic peptide near the center of human ARL15. The immunogen is located within amino acids 130 - 180 of ARL15.

Target

ARL15

Preservatives

ARL15 Antibody is supplied in PBS containing 0.02% sodium azide.

Form/Appearance

Liquid

Concentration

1 mg/mL

Storage

ARL15 antibody can be stored at 4°C for three months and -20°C, stable for up to one year. As with all antibodies care should be taken to avoid repeated freeze thaw cycles. Antibodies should not be exposed to prolonged high temperatures.

Note

For research use only

Application notes

ARL15 antibody can be used for detection of Arl15 by Western blot at 1 µg/mL. Antibody can also be used for immunohistochemistry starting at 5 µg/mL. Antibody validated: Western Blot in human samples and Immunohistochemistry in human samples. All other applications and species not yet tested.

Isotype

IgG

Clonality

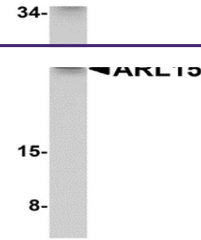
Polyclonal

Uniprot ID
[Q9NXU5](#)
NCBI
[NP_061960](#)
Dilution Range

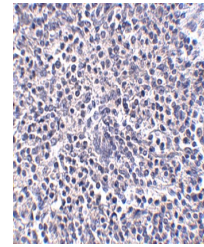
ARL15 antibody can be used for detection of Arl15 by Western blot at 1 µg/mL. Antibody can also be used for immunohistochemistry starting at 5 µg/mL. Antibody validated: Western Blot in human samples and Immunohistochemistry in human samples. All other applications and species not yet tested.

Expiration Date

12 months from date of receipt.



Western blot analysis of ARL15 in K562 c...



Immunohistochemistry of ARL15 in human s...