

---

## Product Datasheet

### ARL6IP1 Antibody (orb1240204)

**Description**

ARL6IP1 Antibody

**Species/Host**

Rabbit

**Reactivity**

Human, Mouse

**Conjugation**

Unconjugated

**Tested Applications**

ELISA, IF, IHC-P, WB

**Immunogen**

ARMER antibody was raised against a peptide corresponding to 15 amino acids near the C-terminus of human ARMER. The immunogen is located within the last 50 amino acids of ARMER.

**Target**

ARL6IP1

**Preservatives**

ARMER Antibody is supplied in PBS containing 0.02% sodium azide.

**Form/Appearance**

Liquid

**Concentration**

1 mg/mL

**Storage**

ARMER antibody can be stored at 4°C for three months and -20°C, stable for up to one year. As with all antibodies care should be taken to avoid repeated freeze thaw cycles. Antibodies should not be exposed to prolonged high temperatures.

**Note**

For research use only

**Application notes**

ARMER antibody can be used for detection of ARMER by Western blot at 0.5 to 2 µg/mL. Antibody can also be used for immunohistochemistry starting at 2 µg/mL. For immunofluorescence start at 2 µg/mL. Antibody validated: Western Blot in mouse samples; Immunohistochemistry in human samples and Immunofluorescence in mouse samples. All other applications and species not yet tested.

**Isotype**

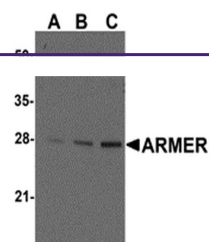
IgG

**Clonality**

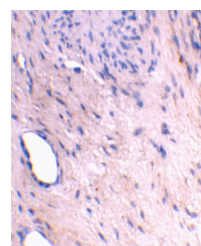
Polyclonal

**Uniprot ID**
[Q15041](#)
**NCBI**
[Q15041](#)
**Dilution Range**

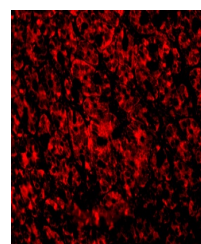
ARMER antibody can be used for detection of ARMER by Western blot at 0.5 to 2 µg/mL. Antibody can also be used for immunohistochemistry starting at 2 µg/mL. For immunofluorescence start at 2 µg/mL. Antibody validated: Western Blot in mouse samples; Immunohistochemistry in human samples



Western blot analysis of ARMER in mouse...



Immunohistochemical staining of human bladder...



Immunofluorescence of ARMER in Mouse Intestine...