
Product Datasheet

ARR3 Antibody (orb1240203)

Description

ARR3 Antibody

Species/Host

Rabbit

Reactivity

Human, Mouse, Rat

Conjugation

Unconjugated

Tested Applications

ELISA, IF, IHC-P, WB

Immunogen

ARR3 antibody was raised against a 17 amino acid peptide near the carboxy terminus of human ARR3. The immunogen is located within the last 50 amino acids of ARR3.

Target

ARR3

Preservatives

ARR3 antibody is supplied in PBS containing 0.02% sodium azide.

Form/Appearance

Liquid

Concentration

1 mg/mL

Storage

ARR3 antibody can be stored at 4°C for three months and -20°C, stable for up to one year.

Note

For research use only

Application notes

ARR3 antibody can be used for detection of ARR3 by Western blot at 0.5 - 1 µg/ml. Antibody can also be used for immunohistochemistry starting at 2 µg/mL. For immunofluorescence start at 20 µg/mL. Antibody validated: Western Blot in mouse samples; Immunohistochemistry in mouse samples and Immunofluorescence in mouse samples. All other applications and species not yet tested.

Isotype

IgG

Clonality

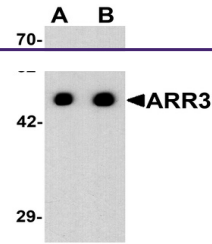
Polyclonal

MW

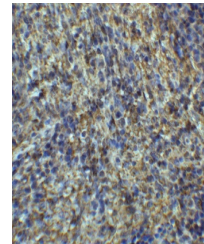
Predicted: 43 kDa Observed: 47 kDa

Uniprot ID
[P36575](#)
NCBI
[NP_004303](#)
Dilution Range

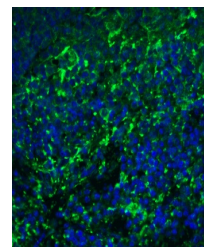
ARR3 antibody can be used for detection of ARR3 by Western blot at 0.5 - 1 µg/ml. Antibody can also be used for immunohistochemistry starting at 2 µg/mL. For immunofluorescence start at 20 µg/mL. Antibody validated: Western Blot in mouse samples; Immunohistochemistry in mouse samples and Immunofluorescence in mouse samples. All other applications and species not yet tested.



Western blot analysis of ARR3 in EL4 cel...



Immunohistochemistry of ARR3 in mouse sp...



Immunofluorescence of ARR3 in mouse sple...