
Product Datasheet

SEPT4 Antibody (orb1240201)

Description

SEPT4 Antibody

Species/Host

Rabbit

Reactivity

Human

Conjugation

Unconjugated

Tested

ELISA, IF, IHC-P, WB

Applications
Immunogen

ARTS antibody was raised against a synthetic peptide corresponding to amino acids near the amino terminus of human ARTS. The immunogen is located within the first 50 amino acids of ARTS.

Target

SEPT4

Preservatives

ARTS Antibody is supplied in PBS containing 0.02% sodium azide.

Form/Appearance

Liquid

Concentration

1 mg/mL

Storage

ARTS antibody can be stored at 4°C for three months and -20°C, stable for up to one year. As with all antibodies care should be taken to avoid repeated freeze thaw cycles. Antibodies should not be exposed to prolonged high temperatures.

Note

For research use only

Application notes

ARTS antibody can be used for detection of ARTS by Western blot at 2 µg/mL. A band at 32 kDa can be detected. Antibody can also be used for immunohistochemistry starting at 2 µg/mL. For immunofluorescence start at 20 µg/mL. Antibody validated: Western Blot in human samples; Immunohistochemistry in human samples and Immunofluorescence in human samples. All other applications and species not yet tested.

Isotype

IgG

Clonality

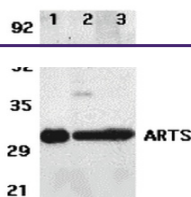
Polyclonal

MW

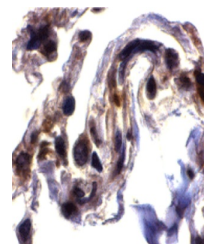
32 kDa

Uniprot ID
[O43236](#)
NCBI
[AAG45673](#)
Dilution Range

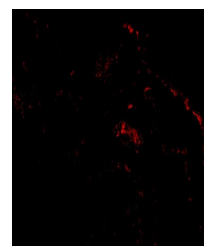
ARTS antibody can be used for detection of ARTS by Western blot at 2 µg/mL. A band at 32 kDa can be detected. Antibody can also be used for immunohistochemistry starting at 2 µg/mL. For



Western blot analysis of ARTS expression...



Immunohistochemistry of ARTS in human lu...



Immunofluorescence of ARTS in Human Lung...