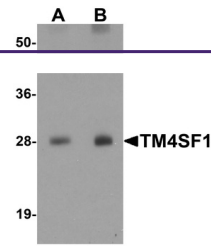
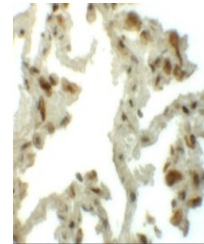

Product Datasheet

TM4SF1 Antibody (orb1240200)

Description	TM4SF1 Antibody
Species/Host	Rabbit
Reactivity	Human, Mouse, Rat
Conjugation	Unconjugated
Tested Applications	ELISA, IF, IHC-P, WB
Immunogen	TM4SF1 antibody was raised against an 18 amino acid synthetic peptide near the amino terminus of human TM4SF1. The immunogen is located within the first 50 amino acids of TM4SF1.
Target	TM4SF1
Preservatives	TM4SF1 Antibody is supplied in PBS containing 0.02% sodium azide.
Form/Appearance	Liquid
Concentration	1 mg/mL
Storage	TM4SF1 antibody can be stored at 4°C for three months and -20°C, stable for up to one year. As with all antibodies care should be taken to avoid repeated freeze thaw cycles. Antibodies should not be exposed to prolonged high temperatures.
Note	For research use only
Application notes	TM4SF1 antibody can be used for detection of TM4SF1 by Western blot at 0.5 - 1 µg/mL. Antibody can also be used for immunohistochemistry starting at 5 µg/mL. For immunofluorescence start at 20 µg/mL. Antibody validated: Western Blot in human samples; Immunohistochemistry in human and mouse samples and Immunofluorescence in human and mouse samples. All other applications and species not yet tested.
Isotype	IgG
Clonality	Polyclonal
Uniprot ID	P30408
NCBI	NP_055035
Dilution Range	TM4SF1 antibody can be used for detection of TM4SF1 by Western blot at 0.5 - 1 µg/mL. Antibody can also be used for immunohistochemistry starting at 5 µg/mL. For immunofluorescence start at 20 µg/mL. Antibody validated: Western Blot in human

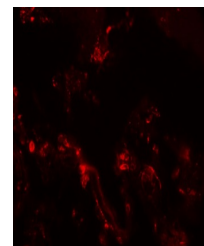


Western blot analysis of TM4SF1 in human...



Immunohistochemistry of TM4SF1 in human

...



Immunofluorescence of TM4SF1 in human lu...