

Product Datasheet

C12orf44 Antibody (orb1240192)

Description

C12orf44 Antibody

Species/Host

Rabbit

Reactivity

Human, Mouse, Rat

Conjugation

Unconjugated

Tested

ELISA, IF, IHC-P, WB

Applications
Immunogen

ATG101 antibody was raised against a 16 amino acid synthetic peptide near the center of human ATG101. The immunogen is located within amino acids 80 - 130 of ATG101.

Target

C12orf44

Preservatives

ATG101 Antibody is supplied in PBS containing 0.02% sodium azide.

Form/Appearance

Liquid

Concentration

1 mg/mL

Storage

ATG101 antibody can be stored at 4°C for three months and -20°C, stable for up to one year. As with all antibodies care should be taken to avoid repeated freeze thaw cycles. Antibodies should not be exposed to prolonged high temperatures.

Note

For research use only

Application notes

ATG101 antibody can be used for detection of ATG101 by Western blot at 1 - 2 µg/mL. Antibody can also be used for immunohistochemistry starting at 5 µg/mL. For immunofluorescence start at 20 µg/mL. Antibody validated: Western Blot in human samples; Immunohistochemistry in mouse samples and Immunofluorescence in mouse samples. All other applications and species not yet tested.

Isotype

IgG

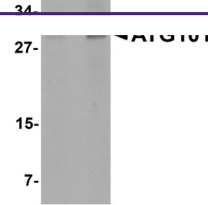
Clonality

Polyclonal

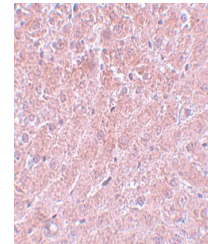
Uniprot ID
[Q9BSB4](#)
NCBI
[NP_001092143](#)
Dilution Range

ATG101 antibody can be used for detection of ATG101 by Western blot at 1 - 2 µg/mL. Antibody can also be used for immunohistochemistry starting at 5 µg/mL. For immunofluorescence start at 20 µg/mL. Antibody validated: Western Blot in human samples; Immunohistochemistry in mouse samples

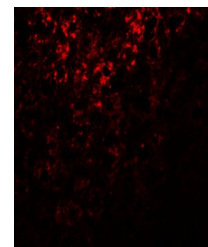
A B



Western blot analysis of ATG101 in human...



Immunohistochemistry of ATG101 in mouse ...



Immunofluorescence of ATG101 in mouse li...