
Product Datasheet

ATG16L1 Antibody (orb1240187)

Description

ATG16L1 Antibody

Species/Host

Rabbit

Reactivity

Human

Conjugation

Unconjugated

Tested Applications

ELISA, ICC, IF, WB

Immunogen

ATG16 antibody was raised against a 18 amino acid synthetic peptide from near the amino terminus of human ATG16. The immunogen is located within amino acids 40 - 90 of ATG16.

Target

ATG16L1

Preservatives

ATG16 Antibody is supplied in PBS containing 0.02% sodium azide.

Form/Appearance

Liquid

Concentration

1 mg/mL

Storage

ATG16 antibody can be stored at 4°C for three months and -20°C, stable for up to one year. As with all antibodies care should be taken to avoid repeated freeze thaw cycles. Antibodies should not be exposed to prolonged high temperatures.

Note

For research use only

Application notes

ATG16 antibody can be used for the detection of ATG16 by Western blot at 1 and 2 µg/mL. Antibody can also be used for immunocytochemistry starting at 2 µg/mL. For immunofluorescence start at 4 µg/mL. Antibody validated: Western Blot in human samples; Immunocytochemistry in human samples and Immunofluorescence in human samples. All other applications and species not yet tested.

Isotype

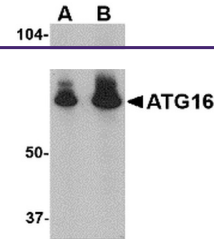
IgG

Clonality

Polyclonal

Uniprot ID
[Q676U5](#)
NCBI
[NP_110430](#)
Dilution Range

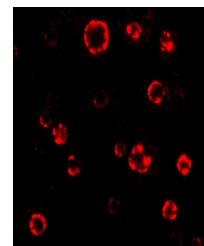
ATG16 antibody can be used for the detection of ATG16 by Western blot at 1 and 2 µg/mL. Antibody can also be used for immunocytochemistry starting at 2 µg/mL. For immunofluorescence start at 4 µg/mL. Antibody validated: Western Blot in human samples; Immunocytochemistry in human samples



Western blot analysis of ATG16 in HeLa c...



Immunocytochemistry of ATG16 in HeLa cel...



Immunofluorescence of ATG16 in HeLa cell...