
Product Datasheet

ATG4B Antibody (orb1240182)

Description

ATG4B Antibody

Species/Host

Rabbit

Reactivity

Human, Mouse, Rat

Conjugation

Unconjugated

Tested Applications

ELISA, IF, IHC-P, WB

Immunogen

ATG4B antibody was raised against a 17 amino acid peptide near the carboxy terminus of human ATG4B. The immunogen is located within the last 50 amino acids of ATG4B.

Target

ATG4B

Preservatives

ATG4B antibody is supplied in PBS containing 0.02% sodium azide.

Form/Appearance

Liquid

Concentration

1 mg/mL

Storage

ATG4B antibody can be stored at 4°C for three months and -20°C, stable for up to one year.

Note

For research use only

Application notes

ATG4B antibody can be used for detection of ATG4B by Western blot at 1 - 2 µg/ml. Antibody can also be used for immunohistochemistry starting at 5 µg/mL. For immunofluorescence start at 20 µg/mL. Antibody validated: Western Blot in human samples; Immunohistochemistry in human samples and Immunofluorescence in human samples. All other applications and species not yet tested.

Isotype

IgG

Clonality

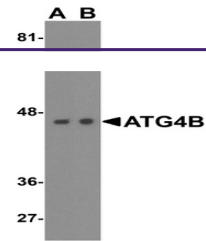
Polyclonal

MW

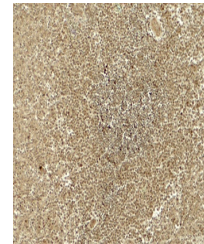
Predicted: 43 kDa Observed: 46 kDa

Uniprot ID
[Q9Y4P1](#)
NCBI
[NP_037457](#)
Dilution Range

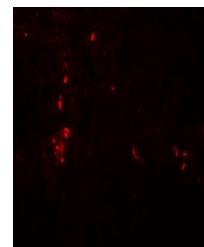
ATG4B antibody can be used for detection of ATG4B by Western blot at 1 - 2 µg/ml. Antibody can also be used for immunohistochemistry starting at 5 µg/mL. For immunofluorescence start at 20 µg/mL. Antibody validated: Western Blot in human samples; Immunohistochemistry in human samples and Immunofluorescence in human samples. All other applications and species not yet tested.



Western blot analysis of ATG4B in (A) Ra...



Immunohistochemistry of ATG4B in human s...



Immunofluorescence of ATG4B in human spl...