
Product Datasheet

ATG9A Antibody (orb1240177)

Description

ATG9A Antibody

Species/Host

Rabbit

Reactivity

Human, Mouse, Rat

Conjugation

Unconjugated

Tested

ELISA, IF, IHC-P, WB

Applications
Immunogen

ATG9A antibody was raised against an 18 amino acid synthetic peptide near the carboxy terminus of human ATG9A. The immunogen is located within amino acids 720 - 770 of ATG9A.

Target

ATG9A

Preservatives

ATG9A Antibody is supplied in PBS containing 0.02% sodium azide.

Form/Appearance

Liquid

Concentration

1 mg/mL

Storage

ATG9A antibody can be stored at 4°C for three months and -20°C, stable for up to one year. As with all antibodies care should be taken to avoid repeated freeze thaw cycles. Antibodies should not be exposed to prolonged high temperatures.

Note

For research use only

Application notes

ATG9A antibody can be used for detection of ATG9A by Western blot at 1 µg/mL. Antibody can also be used for immunohistochemistry starting at 5 µg/mL. For immunofluorescence start at 20 µg/mL. Antibody validated: Western Blot in mouse samples; Immunohistochemistry in human samples and Immunofluorescence in human samples. All other applications and species not yet tested.

Isotype

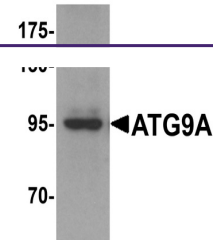
IgG

Clonality

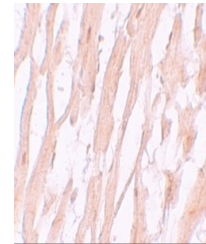
Polyclonal

Uniprot ID
[Q7Z3C6](#)
NCBI
[NP_076990](#)
Dilution Range

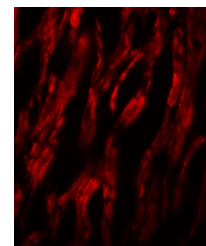
ATG9A antibody can be used for detection of ATG9A by Western blot at 1 µg/mL. Antibody can also be used for immunohistochemistry starting at 5 µg/mL. For immunofluorescence start at 20 µg/mL. Antibody validated: Western Blot in mouse samples; Immunohistochemistry in human samples and



Western blot analysis of ATG9A in mouse ...



Immunohistochemistry of ATG9A in human h...



Immunofluorescence of ATG9A in human hea...