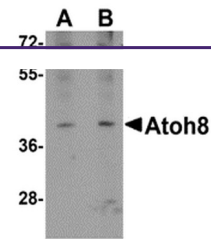


---

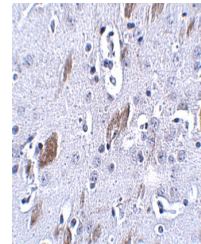
## Product Datasheet

### ATOH8 Antibody (orb1240173)

<b>Description</b>	ATOH8 Antibody
<b>Species/Host</b>	Rabbit
<b>Reactivity</b>	Human, Mouse, Rat
<b>Conjugation</b>	Unconjugated
<b>Tested Applications</b>	ELISA, IHC-P, WB
<b>Immunogen</b>	ATOH8 antibody was raised against a 15 amino acid synthetic peptide near the carboxy terminus of human ATOH8. The immunogen is located within the last 50 amino acids of ATOH8.
<b>Target</b>	ATOH8
<b>Preservatives</b>	ATOH8 Antibody is supplied in PBS containing 0.02% sodium azide.
<b>Form/Appearance</b>	Liquid
<b>Concentration</b>	1 mg/mL
<b>Storage</b>	ATOH8 antibody can be stored at 4°C for three months and -20°C, stable for up to one year. As with all antibodies care should be taken to avoid repeated freeze thaw cycles. Antibodies should not be exposed to prolonged high temperatures.
<b>Note</b>	For research use only
<b>Application notes</b>	ATOH8 antibody can be used for detection of ATOH8 by Western blot at 1 - 2 µg/mL. Antibody can also be used for immunohistochemistry starting at 5 µg/mL. Antibody validated: Western Blot in mouse samples and Immunohistochemistry in mouse samples. All other applications and species not yet tested.
<b>Isotype</b>	IgG
<b>Clonality</b>	Polyclonal
<b>MW</b>	Predicted: 35 kDa Observed: 40 kDa
<b>Uniprot ID</b>	<a href="#">Q96SQ7</a>
<b>NCBI</b>	<a href="#">NP_116216</a>
<b>Dilution Range</b>	ATOH8 antibody can be used for detection of ATOH8 by Western blot at 1 - 2 µg/mL. Antibody can also be used for immunohistochemistry starting at 5 µg/mL. Antibody validated: Western Blot in mouse samples and Immunohistochemistry in mouse samples. All other applications and species not yet tested.



Western blot analysis of ATOH8 in A-20 c...



Immunohistochemistry of ATOH8 in mouse b...