

---

## Product Datasheet

### ATP11B Antibody (orb1240171)

**Description**

ATP11B Antibody

**Species/Host**

Rabbit

**Reactivity**

Human, Mouse

**Conjugation**

Unconjugated

**Tested Applications**

ELISA, ICC, IF, WB

**Immunogen**

ATP11B antibody was raised against a 19 amino acid synthetic peptide near the amino terminus of human ATP11B. The immunogen is located within amino acids 290 - 340 of ATP11B.

**Target**

ATP11B

**Preservatives**

ATP11B Antibody is supplied in PBS containing 0.02% sodium azide.

**Form/Appearance**

Liquid

**Concentration**

1 mg/mL

**Storage**

ATP11B antibody can be stored at 4°C for three months and -20°C, stable for up to one year. As with all antibodies care should be taken to avoid repeated freeze thaw cycles. Antibodies should not be exposed to prolonged high temperatures.

**Note**

For research use only

**Application notes**

ATP11B antibody can be used for detection of ATP11B by Western blot at 1 µg/mL. Antibody can also be used for immunocytochemistry starting at 10 µg/mL. For immunofluorescence start at 20 µg/mL. Antibody validated: Western Blot in human samples; Immunocytochemistry in human samples and Immunofluorescence in human samples. All other applications and species not yet tested.

**Isotype**

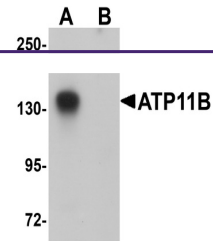
IgG

**Clonality**

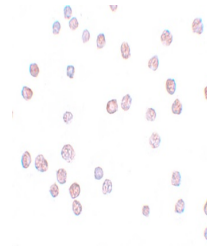
Polyclonal

**Uniprot ID**
[Q9Y2G3](#)
**NCBI**
[NP\\_055431](#)
**Dilution Range**

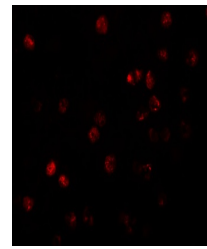
ATP11B antibody can be used for detection of ATP11B by Western blot at 1 µg/mL. Antibody can also be used for immunocytochemistry starting at 10 µg/mL. For immunofluorescence start at 20 µg/mL. Antibody validated: Western Blot in human samples; Immunocytochemistry in human samples



Western blot analysis of ATP11B in K562 ...



Immunocytochemistry of ATP11B in K562 ce...



Immunofluorescence of ATP11B in K562 cel...