

---

## Product Datasheet

### ANTXR1 Antibody (orb1240168)

**Description**

ANTXR1 Antibody

**Species/Host**

Rabbit

**Reactivity**

Human, Mouse, Rat

**Conjugation**

Unconjugated

**Tested**

ELISA, ICC, IF, WB

**Applications**
**Immunogen**

ATR antibody was raised against a peptide corresponding to 13 amino acids near the C-terminus of human ATR. The immunogen is located within the last 50 amino acids of ATR.

**Target**

ANTXR1

**Preservatives**

ATR Antibody is supplied in PBS containing 0.02% sodium azide.

**Form/Appearance**

Liquid

**Concentration**

1 mg/mL

**Storage**

ATR antibody can be stored at 4°C for three months and -20°C, stable for up to one year. As with all antibodies care should be taken to avoid repeated freeze thaw cycles. Antibodies should not be exposed to prolonged high temperatures.

**Note**

For research use only

**Application notes**

ATR antibody can be used for detection of ATR by Western blot at 0.5 to 2 µg/mL. Antibody can also be used for immunocytochemistry starting at 2 µg/mL. For immunofluorescence start at 10 µg/mL. Antibody validated: Western Blot in human samples; Immunocytochemistry in human samples and Immunofluorescence in human samples. All other applications and species not yet tested.

**Isotype**

IgG

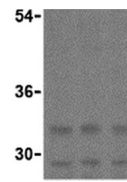
**Clonality**

Polyclonal

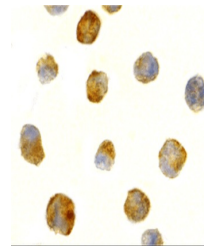
**Uniprot ID**
[Q9H6X2](#)
**NCBI**
[NP\\_444262](#)
**Dilution Range**

ATR antibody can be used for detection of ATR by Western blot at 0.5 to 2 µg/mL. Antibody can also be used for immunocytochemistry starting at 2 µg/mL. For immunofluorescence start at 10 µg/mL. Antibody validated: Western Blot in human samples; Immunocytochemistry in human samples and

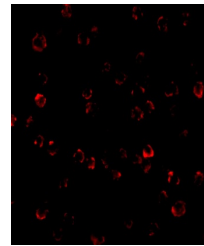
A B C



Western blot analysis of ATR in K562 cel...



Immunocytochemistry of ATR in K562 cells...



Immunofluorescence of ATR in K562 cells ...