

Product Datasheet

ANTXR1 Antibody (orb1240167)

Description

ANTXR1 Antibody

Species/Host

Rabbit

Conjugation

Unconjugated

Tested Applications

ELISA, IF, IHC-P, WB

Immunogen

ATR antibody was raised against a peptide corresponding to 13 amino acids near the center of human ATR. The immunogen is located within amino acids 220 - 270 of ATR.

Target

ANTXR1

Preservatives

ATR Antibody is supplied in PBS containing 0.02% sodium azide.

Form/Appearance

Liquid

Concentration

1 mg/mL

Storage

ATR antibody can be stored at 4°C for three months and -20°C, stable for up to one year. As with all antibodies care should be taken to avoid repeated freeze thaw cycles. Antibodies should not be exposed to prolonged high temperatures.

Note

For research use only

Application notes

ATR antibody can be used for detection of ATR by Western blot at 0.5 to 2 µg/mL. Antibody can also be used for immunohistochemistry starting at 2 µg/mL. For immunofluorescence start at 10 µg/mL. Antibody validated: Western Blot in human samples; Immunohistochemistry in human samples and Immunofluorescence in human samples. All other applications and species not yet tested.

Isotype

IgG

Clonality

Polyclonal

MW

Predicted: 36, 40, 60 kDa Observed: 45 kDa

Uniprot ID

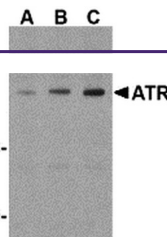
Q9H6X2

NCBI

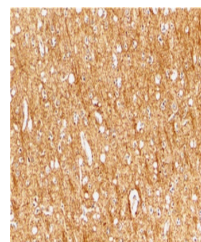
NP_444262

Dilution Range

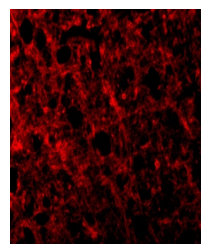
ATR antibody can be used for detection of ATR by Western blot at 0.5 to 2 µg/mL. Antibody can also be used for immunohistochemistry starting at 2 µg/mL. For immunofluorescence start at 10 µg/mL. Antibody validated: Western Blot in human samples; Immunohistochemistry in human samples and



Western blot analysis of ATR in HepG2 ce...



Immunohistochemical staining of human br...



Immunofluorescence of ATR in Human Brain...