

---

## Product Datasheet

### AVEN Antibody (orb1240166)

**Description**

AVEN Antibody

**Species/Host**

Rabbit

**Reactivity**

Human, Mouse, Rat

**Conjugation**

Unconjugated

**Tested Applications**

ELISA, IF, IHC-P, WB

**Immunogen**

Aven antibody was raised against a 14 amino acid synthetic peptide from near the carboxy terminus of human Aven. The immunogen is located within the last 50 amino acids of Aven.

**Target**

AVEN

**Preservatives**

Aven Antibody is supplied in PBS containing 0.02% sodium azide.

**Form/Appearance**

Liquid

**Concentration**

1 mg/ml

**Storage**

Aven antibody can be stored at 4°C for three months and -20°C, stable for up to one year. As with all antibodies care should be taken to avoid repeated freeze thaw cycles. Antibodies should not be exposed to prolonged high temperatures.

**Note**

For research use only

**Application notes**

Aven antibody can be used for detection of Aven by Western blot at 1 µg/mL. Despite its predicted molecular weight, Aven often migrates at 55 kDa in SDS-PAGE. Antibody can also be used for immunohistochemistry starting at 5 µg/mL. For immunofluorescence start at 20 µg/mL. Antibody validated: Western Blot in human samples; Immunohistochemistry in human samples and Immunofluorescence in human samples. All other applications and species not yet tested.

**Isotype**

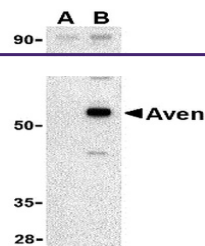
IgG

**Clonality**

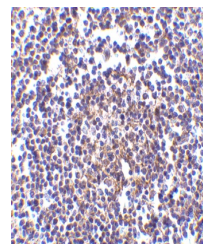
Polyclonal

**Uniprot ID**
[Q9NQS1](#)
**NCBI**
[NP\\_065104](#)
**Dilution Range**

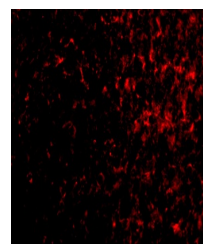
Aven antibody can be used for detection of Aven by Western blot at 1 µg/mL. Despite its predicted molecular weight, Aven often migrates at 55 kDa in SDS-PAGE. Antibody can also be used for



Western blot analysis of Aven in Raji ce...



Immunohistochemistry of Aven in human sple...



Immunofluorescence of AVEN in Human Sple...