
Product Datasheet

AVEN Antibody (orb1240165)

Description

AVEN Antibody

Species/Host

Rabbit

Reactivity

Human, Mouse, Rat

Conjugation

Unconjugated

Tested Applications

ELISA, IF, IHC-P, WB

Immunogen

Aven antibody was raised against a 18 amino acid synthetic peptide from near the amino terminus of human Aven. The immunogen is located within the first 50 amino acids of Aven.

Target

AVEN

Preservatives

Aven Antibody is supplied in PBS containing 0.02% sodium azide.

Form/Appearance

Liquid

Concentration

1 mg/ml

Storage

Aven antibody can be stored at 4°C for three months and -20°C, stable for up to one year. As with all antibodies care should be taken to avoid repeated freeze thaw cycles. Antibodies should not be exposed to prolonged high temperatures.

Note

For research use only

Application notes

Aven antibody can be used for detection of Aven by Western blot at 1 µg/mL. Despite its predicted molecular weight, Aven often migrates at 55 kDa in SDS-PAGE. Antibody can also be used for immunohistochemistry starting at 5 µg/mL. For immunofluorescence start at 20 µg/mL. Antibody validated: Western Blot in human samples; Immunohistochemistry in human samples and Immunofluorescence in human samples. All other applications and species not yet tested.

Isotype

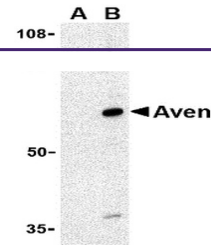
IgG

Clonality

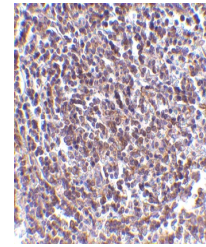
Polyclonal

Uniprot ID
Q9NQS1
NCBI
NP_065104
Dilution Range

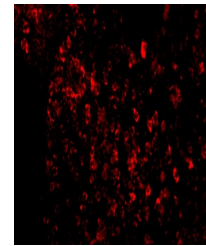
Aven antibody can be used for detection of Aven by Western blot at 1 µg/mL. Despite its predicted molecular weight, Aven often migrates at 55 kDa in SDS-PAGE. Antibody can also be used for



Western blot analysis of Aven in Raji ce...



Immunohistochemistry of Aven in human sp...



Immunofluorescence of AVEN in Human Sple...