
Product Datasheet

BACE2 Antibody (orb1240151)

Description

BACE2 Antibody

Species/Host

Rabbit

Reactivity

Human, Mouse, Rat

Conjugation

Unconjugated

Tested Applications

ELISA, IHC-P, WB

Immunogen

BACE2 antibody was raised against a 16 amino acid peptide near the amino terminus of human BACE2. The immunogen is located within amino acids 30 - 80 of BACE2.

Target

BACE2

Preservatives

BACE2 Antibody is supplied in PBS containing 0.02% sodium azide.

Form/Appearance

Liquid

Concentration

1 mg/mL

Storage

BACE2 antibody can be stored at 4°C for three months and -20°C, stable for up to one year. As with all antibodies care should be taken to avoid repeated freeze thaw cycles. Antibodies should not be exposed to prolonged high temperatures.

Note

For research use only

Application notes

BACE2 can be used for detection of BACE2 by Western blot at 1 µg/mL. Antibody can also be used for immunohistochemistry starting at 10 µg/mL. Antibody validated: Western Blot in human and mouse samples and Immunohistochemistry in mouse samples. All other applications and species not yet tested.

Isotype

IgG

Clonality

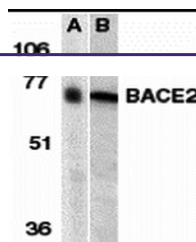
Polyclonal

MW

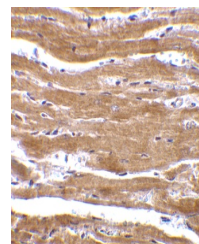
Predicted: 57 kDa Observed: 66 kDa

Uniprot ID
[Q9Y5Z0](#)
NCBI
[AAF17078](#)
Dilution Range

BACE2 can be used for detection of BACE2 by Western blot at 1 µg/mL. Antibody can also be used for immunohistochemistry starting at 10 µg/mL. Antibody validated: Western Blot in human and mouse samples and Immunohistochemistry in mouse samples. All other applications and species not yet tested.



Western blot analysis of BACE2 in (A) hu...



Immunohistochemistry of BACE2 in mouse h...