

## Product Datasheet

### **BACE2 Antibody (orb1240150)**

**Description**

BACE2 Antibody

**Species/Host**

Rabbit

**Reactivity**

Human

**Conjugation**

Unconjugated

**Tested Applications**

ELISA, IHC-P, WB

**Immunogen**

BACE2 antibody was raised against a peptide corresponding to amino acids near the carboxy terminus of human BACE2. The immunogen is located within the last 50 amino acids of BACE2.

**Target**

BACE2

**Preservatives**

BACE2 Antibody is supplied in PBS containing 0.02% sodium azide.

**Form/Appearance**

Liquid

**Concentration**

1 mg/ml

**Storage**

BACE2 antibody can be stored at 4°C for three months and -20°C, stable for up to one year. As with all antibodies care should be taken to avoid repeated freeze thaw cycles. Antibodies should not be exposed to prolonged high temperatures.

**Note**

For research use only

**Application notes**

BACE2 antibody can be used for detection of BACE2 by Western blot at 1 µg/mL. Antibody can also be used for immunohistochemistry starting at 2 µg/mL. Antibody validated: Western Blot in human samples and Immunohistochemistry in rat samples. All other applications and species not yet tested.

**Isotype**

IgG

**Clonality**

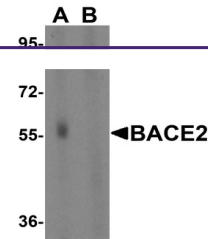
Polyclonal

**MW**

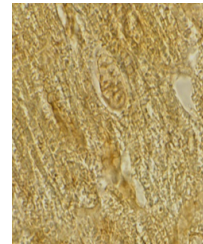
Predicted: 57 kDa Observed: 57 kDa

**Uniprot ID**
[Q9Y5Z0](#)
**NCBI**
[AAF17078](#)
**Dilution Range**

BACE2 antibody can be used for detection of BACE2 by Western blot at 1 µg/mL. Antibody can also be used for immunohistochemistry starting at 2 µg/mL. Antibody validated: Western Blot in human samples and Immunohistochemistry in rat samples. All other applications and species not yet tested.



Western blot analysis of BACE2 in human ...



Immunohistochemistry of BACE2 in rat hea...