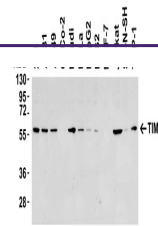


---

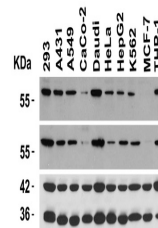
## Product Datasheet

### HAVCR1 Antibody (orb1240149)

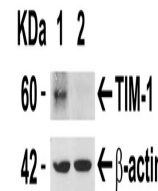
<b>Description</b>	HAVCR1 Antibody
<b>Species/Host</b>	Rabbit
<b>Reactivity</b>	Human, Mouse
<b>Conjugation</b>	Unconjugated
<b>Tested Applications</b>	ELISA, IF, IHC-P, WB
<b>Immunogen</b>	Anti-TIM-1 antibody (orb1240149) was raised against a peptide corresponding to 16 amino acids near the amino terminus of human TIM-1. The immunogen is located within amino acids 50 - 100 of TIM-1.
<b>Target</b>	HAVCR1
<b>Preservatives</b>	TIM-1 Antibody is supplied in PBS containing 0.02% sodium azide.
<b>Form/Appearance</b>	Liquid
<b>Concentration</b>	1 mg/mL
<b>Storage</b>	TIM-1 antibody can be stored at 4°C up to one year. Antibodies should not be exposed to prolonged high temperatures.
<b>Note</b>	For research use only
<b>Isotype</b>	IgG
<b>Clonality</b>	Polyclonal
<b>MW</b>	Predicted: 44kD Observed: 60kD (Post-modification: 4 N-linked glycosylation)
<b>Uniprot ID</b>	<a href="#">Q96D42</a>
<b>NCBI</b>	<a href="#">NP_036338</a>
<b>Dilution Range</b>	WB: 1 - 8 µg/mL (overnight incubation at 4° C); IHC-P: 10 µg/mL; IF: 20 µg/mL. Antibody validated: Western Blot in human and mouse samples; Immunohistochemistry and Immunofluorescence in human samples. All other applications and species not yet tested.
<b>Expiration Date</b>	12 months from date of receipt.



Western Blot Validation in Human Cell Li...



Independent Antibody Validation (IAV) vi...



Validation with TIM-1 siRNA Knockdown in...