
Product Datasheet

BAMBI Antibody (orb1240142)

Description

BAMBI Antibody

Species/Host

Rabbit

Reactivity

Human, Mouse, Rat

Conjugation

Unconjugated

Tested Applications

ELISA, IF, IHC-P, WB

Immunogen

BAMBI antibody was raised against a 17 amino acid peptide near the center of human BAMBI. The immunogen is located within amino acids 100 - 150 of BAMBI.

Target

BAMBI

Preservatives

BAMBI antibody is supplied in PBS containing 0.02% sodium azide.

Form/Appearance

Liquid

Concentration

1 mg/mL

Storage

BAMBI antibody can be stored at 4°C for three months and -20°C, stable for up to one year.

Note

For research use only

Application notes

BAMBI antibody can be used for detection of BAMBI by Western blot at 1 - 2 µg/ml. Antibody can also be used for Immunohistochemistry starting at 5 µg/mL. For immunofluorescence start at 20 µg/mL. Antibody validated: Western Blot in mouse samples; Immunohistochemistry in human samples and Immunofluorescence in human samples. All other applications and species not yet tested.

Isotype

IgG

Clonality

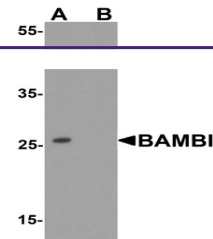
Polyclonal

MW

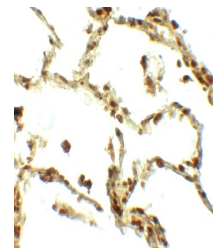
Predicted: 29 kDa Observed: 26 kDa

Uniprot ID
[Q13145](#)
NCBI
[NP_036474](#)
Dilution Range

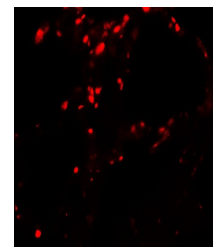
BAMBI antibody can be used for detection of BAMBI by Western blot at 1 - 2 µg/ml. Antibody can also be used for Immunohistochemistry starting at 5 µg/mL. For immunofluorescence start at 20 µg/mL. Antibody validated: Western Blot in mouse samples; Immunohistochemistry in human samples and Immunofluorescence in human samples. All other applications and species not yet tested.



Western blot analysis of BAMBI in mouse ...



Immunohistochemistry of BAMBI in human l...



Immunofluorescence of BAMBI in human lun...