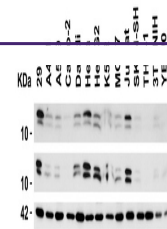
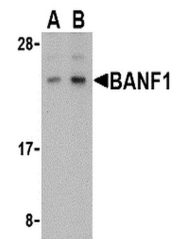

Product Datasheet

BANF1 Antibody (orb1240141)

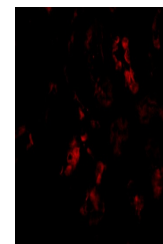
| | |
|----------------------------|---|
| Description | BANF1 Antibody |
| Species/Host | Rabbit |
| Reactivity | Human |
| Conjugation | Unconjugated |
| Tested Applications | ELISA, IF, WB |
| Immunogen | Anti-BANF1 antibody (orb1240141) was raised against a peptide corresponding to 15 amino acids near the carboxy terminus of human BANF1. The immunogen is located within the last 50 amino acids of BANF1. |
| Target | BANF1 |
| Preservatives | BANF1 Antibody is supplied in PBS containing 0.02% sodium azide. |
| Form/Appearance | Liquid |
| Concentration | 1 mg/mL |
| Storage | BANF1 antibody can be stored at 4°C for three months and -20°C, stable for up to one year. As with all antibodies care should be taken to avoid repeated freeze thaw cycles. Antibodies should not be exposed to prolonged high temperatures. |
| Note | For research use only |
| Isotype | IgG |
| Clonality | Polyclonal |
| MW | Predicted: 10kD Observed: 12 kD Despite its predicted molecular weight, BANF1 often migrates at a higher size in SDS-PAGE. |
| Uniprot ID | O75531 |
| NCBI | AAH05942 |
| Dilution Range | WB: 0.5-2 µg/mL; IF: 20 µg/mL. Antibody validated: Western Blot in human samples; Immunofluorescence in human samples. All other applications and species not yet tested. |
| Expiration Date | 12 months from date of receipt. |



Independent Antibody Validation (IAV) vi...



Western Blot Validation in Human Kidney ...



Western Blot Validation in Human Kidney ...