
Product Datasheet

BANP Antibody (orb1240139)

Description

BANP Antibody

Species/Host

Rabbit

Reactivity

Human, Mouse, Rat

Conjugation

Unconjugated

Tested Applications

ELISA, IF, IHC-P, WB

Immunogen

BANP antibody was raised against a 14 amino acid synthetic peptide near the center of human BANP. The immunogen is located within amino acids 300 - 350 of BANP.

Target

BANP

Preservatives

BANP Antibody is supplied in PBS containing 0.02% sodium azide.

Form/Appearance

Liquid

Concentration

1 mg/mL

Storage

BANP antibody can be stored at 4°C for three months and -20°C, stable for up to one year. As with all antibodies care should be taken to avoid repeated freeze thaw cycles. Antibodies should not be exposed to prolonged high temperatures.

Note

For research use only

Application notes

BANP antibody can be used for detection of BANP by Western blot at 1 - 2 µg/mL. Antibody can also be used for immunohistochemistry starting at 10 µg/mL. For immunofluorescence start at 20 µg/mL. Antibody validated: Western Blot in mouse samples; Immunohistochemistry in human samples and Immunofluorescence in human samples. All other applications and species not yet tested.

Isotype

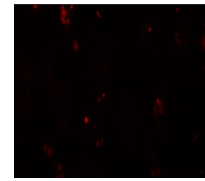
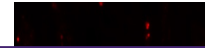
IgG

Clonality

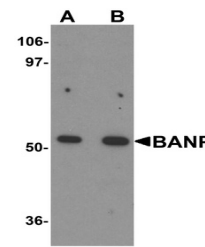
Polyclonal

Uniprot ID
[Q8N9N5](#)
NCBI
[NP_001167014](#)
Dilution Range

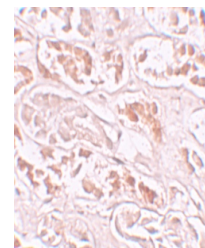
BANP antibody can be used for detection of BANP by Western blot at 1 - 2 µg/mL. Antibody can also be used for immunohistochemistry starting at 10 µg/mL. For immunofluorescence start at 20 µg/mL. Antibody validated: Western Blot in mouse samples; Immunohistochemistry in human samples and



Immunofluorescence of BANP in human kidn...



Western blot analysis of BANP in mouse k...



Immunohistochemistry of BANP in human ki...