
Product Datasheet

BCAP29 Antibody (orb1240138)

Description

BCAP29 Antibody

Species/Host

Rabbit

Reactivity

Human, Mouse, Rat

Conjugation

Unconjugated

Tested Applications

ELISA, IF, IHC-P, WB

Immunogen

BAP29 antibody was raised against a 17 amino acid synthetic peptide from near the center of human Bap29. Bap29 antibody is specific for isoform a of Bap29. The immunogen is located within amino acids 130 - 180 of BAP29.

Target

BCAP29

Preservatives

BAP29 Antibody is supplied in PBS containing 0.02% sodium azide.

Form/Appearance

Liquid

Concentration

1 mg/mL

Storage

BAP29 antibody can be stored at 4°C for three months and -20°C, stable for up to one year. As with all antibodies care should be taken to avoid repeated freeze thaw cycles. Antibodies should not be exposed to prolonged high temperatures.

Note

For research use only

Application notes

Bap29 antibody can be used for the detection of Bap29 by Western blot at 0.5 - 2 µg/mL. Antibody can also be used for immunohistochemistry starting at 10 µg/mL. For immunofluorescence start at 20 µg/mL. Antibody validated: Western Blot in human samples; Immunohistochemistry in human samples and Immunofluorescence in human samples. All other applications and species not yet tested.

Isotype

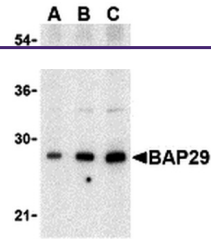
IgG

Clonality

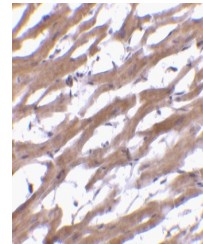
Polyclonal

Uniprot ID
[Q9UHQ4](#)
NCBI
[NP_001008405](#)
Dilution Range

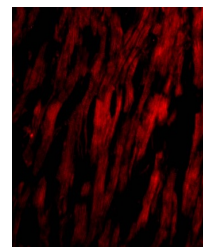
Bap29 antibody can be used for the detection of Bap29 by Western blot at 0.5 - 2 µg/mL. Antibody can also be used for immunohistochemistry starting at 10 µg/mL. For immunofluorescence start at 20 µg/mL. Antibody validated: Western Blot in human



Western blot analysis of Bap29 in human ...



Immunohistochemistry of BAP29 in human h...



Immunofluorescence of BAP29 in Human Hea...