

---

## Product Datasheet

### BAIAP3 Antibody (orb1240135)

**Description**

BAIAP3 Antibody

**Species/Host**

Rabbit

**Reactivity**

Human

**Conjugation**

Unconjugated

**Tested**

ELISA, IF, IHC-P, WB

**Applications**
**Immunogen**

BAP3 antibody was raised against a 12 amino acid synthetic peptide from near the amino terminus of human BAP3. The immunogen is located within the first 50 amino acids of BAP3.

**Target**

BAIAP3

**Preservatives**

BAP3 Antibody is supplied in PBS containing 0.02% sodium azide.

**Form/Appearance**

Liquid

**Concentration**

1 mg/mL

**Storage**

BAP3 antibody can be stored at 4°C for three months and -20°C, stable for up to one year. As with all antibodies care should be taken to avoid repeated freeze thaw cycles. Antibodies should not be exposed to prolonged high temperatures.

**Note**

For research use only

**Application notes**

BAP3 antibody can be used for the detection of BAP3 by Western blot at 2 µg/mL. Antibody can also be used for immunohistochemistry starting at 2.5 µg/mL. For immunofluorescence start at 20 µg/mL. Antibody validated: Western Blot in human samples; Immunohistochemistry in human samples and Immunofluorescence in human samples. All other applications and species not yet tested.

**Isotype**

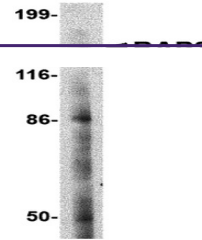
IgG

**Clonality**

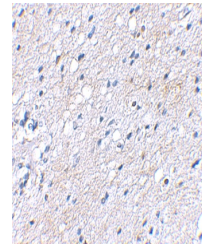
Polyclonal

**Uniprot ID**
[O94812](#)
**NCBI**
[BAA34710](#)
**Dilution Range**

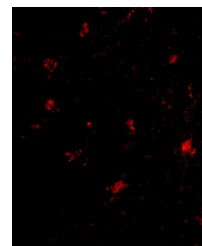
BAP3 antibody can be used for the detection of BAP3 by Western blot at 2 µg/mL. Antibody can also be used for immunohistochemistry starting at 2.5 µg/mL. For immunofluorescence start at 20 µg/mL. Antibody validated: Western Blot in human samples; Immunohistochemistry in human samples



Western blot analysis of BAP3 in SK-N-SH...



Immunohistochemical staining of human br...



Immunofluorescence of BAP3 in human brai...