
Product Datasheet

NKX3-2 Antibody (orb1240133)

Description

NKX3-2 Antibody

Species/Host

Rabbit

Reactivity

Human, Mouse, Rat

Conjugation

Unconjugated

Tested

ELISA, IF, IHC-P, WB

Applications
Immunogen

BAPX1 antibody was raised against a 19 amino acid synthetic peptide near the center of human BAPX1. The immunogen is located within amino acids 180 - 230 of BAPX1.

Target

NKX3-2

Preservatives

BAPX1 Antibody is supplied in PBS containing 0.02% sodium azide.

Form/Appearance

Liquid

Concentration

1 mg/mL

Storage

BAPX1 antibody can be stored at 4°C for three months and -20°C, stable for up to one year. As with all antibodies care should be taken to avoid repeated freeze thaw cycles. Antibodies should not be exposed to prolonged high temperatures.

Note

For research use only

Application notes

BAPX1 antibody can be used for detection of BAPX1 by Western blot at 1 and 2 µg/mL. Antibody can also be used for immunohistochemistry starting at 5 µg/mL. For immunofluorescence start at 20 µg/mL. Antibody validated: Western Blot in human samples; Immunohistochemistry in mouse samples and Immunofluorescence in mouse samples. All other applications and species not yet tested.

Isotype

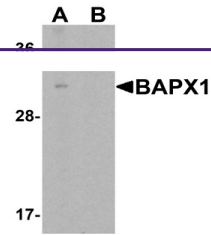
IgG

Clonality

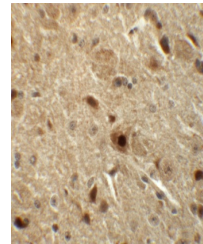
Polyclonal

Uniprot ID
P78367
NCBI
NP_001180
Dilution Range

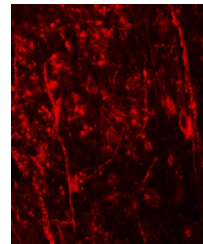
BAPX1 antibody can be used for detection of BAPX1 by Western blot at 1 and 2 µg/mL. Antibody can also be used for immunohistochemistry starting at 5 µg/mL. For immunofluorescence start at 20 µg/mL. Antibody validated: Western Blot in human samples; Immunohistochemistry in mouse samples



Western blot analysis of BAPX1 in human ...



Immunohistochemistry of BAPX1 in mouse b...



Immunofluorescence of BAPX1 in mouse bra...