
Product Datasheet

BATF3 Antibody (orb1240132)

Description

BATF3 Antibody

Species/Host

Rabbit

Reactivity

Human

Conjugation

Unconjugated

Tested Applications

ELISA, IF, IHC-P, WB

Immunogen

BATF3 antibody was raised against a 16 amino acid peptide near the amino terminus of human BATF3. The immunogen is located within the first 50 amino acids of BATF3.

Target

BATF3

Preservatives

BATF3 antibody is supplied in PBS containing 0.02% sodium azide.

Form/Appearance

Liquid

Concentration

1 mg/mL

Storage

BATF3 antibody can be stored at 4°C up to one year. Antibodies should not be exposed to prolonged high temperatures.

Note

For research use only

Application notes

BATF3 body can be used for detection of BATF3 by Western blot at 0.5 µg/ml. Antibody can also be used for Immunohistochemistry starting at 10 µg/mL. For immunofluorescence start at 20 µg/mL. Antibody validated: Western Blot in human samples; Immunohistochemistry in human samples and Immunofluorescence in human samples. All other applications and species not yet tested.

Isotype

IgG

Clonality

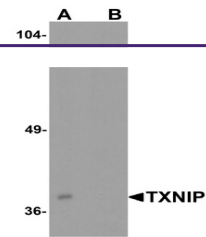
Polyclonal

MW

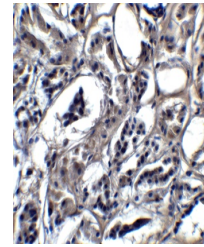
Predicted: 14 kDa Observed: 17 kDa

Uniprot ID
[Q9NR55](#)
NCBI
[NP_061134](#)
Dilution Range

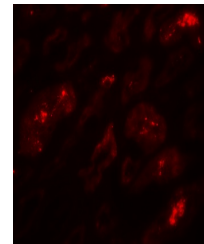
BATF3 body can be used for detection of BATF3 by Western blot at 0.5 µg/ml. Antibody can also be used for Immunohistochemistry starting at 10 µg/mL. For immunofluorescence start at 20 µg/mL. Antibody validated: Western Blot in human samples; Immunohistochemistry in human samples and Immunofluorescence in human samples. All other



Western blot analysis of BATF3 in 293 ce...



Immunohistochemistry of BATF3 in human k...



Immunofluorescence of BATF3 in human kid...