

---

## Product Datasheet

### BCAS1 Antibody (orb1240128)

**Description**

BCAS1 Antibody

**Species/Host**

Rabbit

**Reactivity**

Human

**Conjugation**

Unconjugated

**Tested Applications**

ELISA, IF, IHC-P, WB

**Immunogen**

BCAS1 antibody was raised against a 16 amino acid synthetic peptide near the carboxy terminus of human BCAS1. The immunogen is located within amino acids 460 - 510 of BCAS1.

**Target**

BCAS1

**Preservatives**

BCAS1 Antibody is supplied in PBS containing 0.02% sodium azide.

**Form/Appearance**

Liquid

**Concentration**

1 mg/mL

**Storage**

BCAS1 antibody can be stored at 4°C for three months and -20°C, stable for up to one year. As with all antibodies care should be taken to avoid repeated freeze thaw cycles. Antibodies should not be exposed to prolonged high temperatures.

**Note**

For research use only

**Application notes**

BCAS1 antibody can be used for detection of BCAS1 by Western blot at 1 µg/mL. Antibody can also be used for immunohistochemistry starting at 5 µg/mL. For immunofluorescence start at 20 µg/mL. Antibody validated: Western Blot in human samples; Immunohistochemistry in human samples and Immunofluorescence in human samples. All other applications and species not yet tested.

**Isotype**

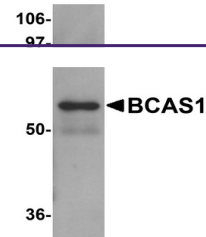
IgG

**Clonality**

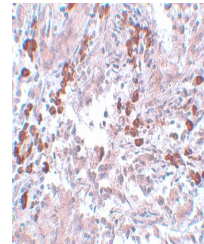
Polyclonal

**Uniprot ID**
[O75363](#)
**NCBI**
[EAW75575](#)
**Dilution Range**

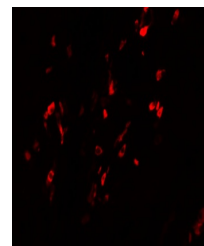
BCAS1 antibody can be used for detection of BCAS1 by Western blot at 1 µg/mL. Antibody can also be used for immunohistochemistry starting at 5 µg/mL. For immunofluorescence start at 20 µg/mL. Antibody validated: Western Blot in human samples; Immunohistochemistry in human samples and



Western blot analysis of BCAS1 in human ...



Immunohistochemistry of BCAS1 in human b...



Immunofluorescence of BCAS1 in Human Bre...