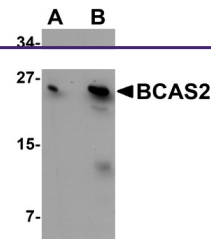
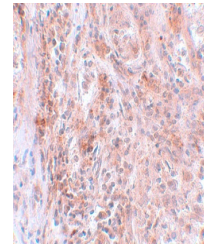

Product Datasheet

BCAS2 Antibody (orb1240127)

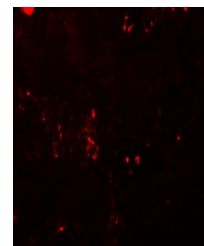
Description	BCAS2 Antibody
Species/Host	Rabbit
Reactivity	Human, Mouse, Rat
Conjugation	Unconjugated
Tested Applications	ELISA, IF, IHC-P, WB
Immunogen	BCAS2 antibody was raised against a 14 amino acid synthetic peptide near the carboxy terminus of human BCAS2. The immunogen is located within the last 50 amino acids of BCAS2.
Target	BCAS2
Preservatives	BCAS2 Antibody is supplied in PBS containing 0.02% sodium azide.
Form/Appearance	Liquid
Concentration	1 mg/mL
Storage	BCAS2 antibody can be stored at 4°C for three months and -20°C, stable for up to one year. As with all antibodies care should be taken to avoid repeated freeze thaw cycles. Antibodies should not be exposed to prolonged high temperatures.
Note	For research use only
Application notes	BCAS2 antibody can be used for detection of BCAS2 by Western blot at 0.5 - 1 µg/mL. Antibody can also be used for immunohistochemistry starting at 5 µg/mL. For immunofluorescence start at 20 µg/mL. Antibody validated: Western Blot in human samples; Immunohistochemistry in human samples and Immunofluorescence in human samples. All other applications and species not yet tested.
Isotype	IgG
Clonality	Polyclonal
Uniprot ID	O75934
NCBI	CAG46834
Dilution Range	BCAS2 antibody can be used for detection of BCAS2 by Western blot at 0.5 - 1 µg/mL. Antibody can also be used for immunohistochemistry starting at 5 µg/mL. For immunofluorescence start at 20 µg/mL. Antibody validated: Western Blot in human samples; Immunohistochemistry in human samples



Western blot analysis of BCAS2 in MCF7 c...



Immunohistochemistry of BCAS2 in human b...



Immunofluorescence of BCAS2 in human bre...